

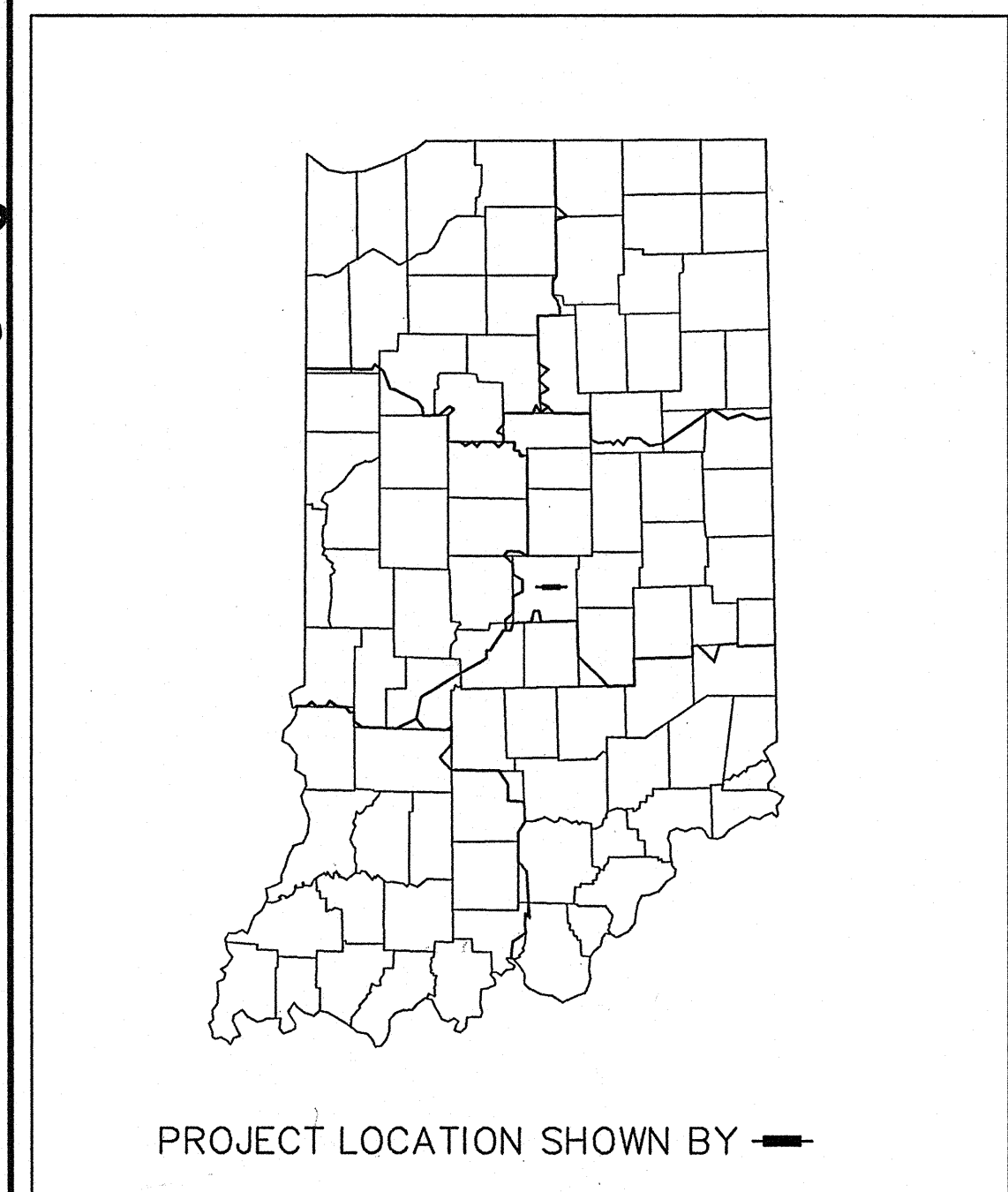
R-26488

PART 3 of 8

PROJECT	DESIGNATION
IM-65-3(288)	SEE INDEX
CONTRACT	BRIDGE FILE
R-26488	SEE INDEX

INDEX					
STRUCTURE	TYPE	SPAN AND SKEW	OVER	R.P.	DESIGNATION
I-65-112-5725A	Br. Deck Reconstruction	3 Spans 2°36'32" Left	Washington Street	111+22	0065610
I-65-112-5728A	Br. Deck Reconstruction	3 Spans Square, 12°00'00" Right	Market Street	111+30	0065611
I-65-112-2431A	Br. Deck Replacement	3 Spans 31°35'18" Left	Ohio Street	111+40	0065612
I-65-112-5730B	Br. Deck Reconstruction	3 Spans Square	New York Street	111+49	0065613
I-65-112-5731A	Br. Deck Reconstruction	3 Spans Square	Vermont Avenue	111+59	0065614
I-65-112-5732A	Br. Deck Reconstruction	3 Spans Varies	Michigan Street	111+69	0065615
I-65-112-5733A	Br. Deck Reconstruction	3 Spans Square	Michigan Street	111+69	0065616
I-65-112-5734A	Br. Deck Reconstruction	3 Spans Varies	Pine Street	111+73	0065617
I-65-112-5735A	Br. Deck Reconstruction	3 Spans 13°00'29" Left	Saint Clair Street	111+95	0065618
I-65-112-5736A	Br. Deck Reconstruction	3 Spans 20°25'54.3" Left	Saint Clair Street	111+95	0065619
I-65-113-5738B	Br. Deck Reconstruction	2 Spans Varies	Tenth Street	112+22	0065620
I-65-113-5744B	Br. Deck Reconstruction	2 Spans Varies	I-70 WB & CD	112+50	0065983
I-65-113-5743B	Br. Deck Reconstruction	2 Spans 12°28'08" Right	I-70 WB & CD	112+41	0065982
I-65-113-5741B	Br. Deck Reconstruction	3 Spans Varies	I-65 NB	112+22	0065980
I-65-113-5747B	Br. Deck Reconstruction	2 Spans Varies	I-70 WB & Ramp	112+50	0065984
I-65-113-5742B	Br. Deck Reconstruction	3 Spans Varies Right	Proposed Ramp Under 5741	112+41	0065981
I-65-113-5750B	Br. Deck Reconstruction	3 Spans Varies Right	Proposed I-70 Ramp	112+55	0065985

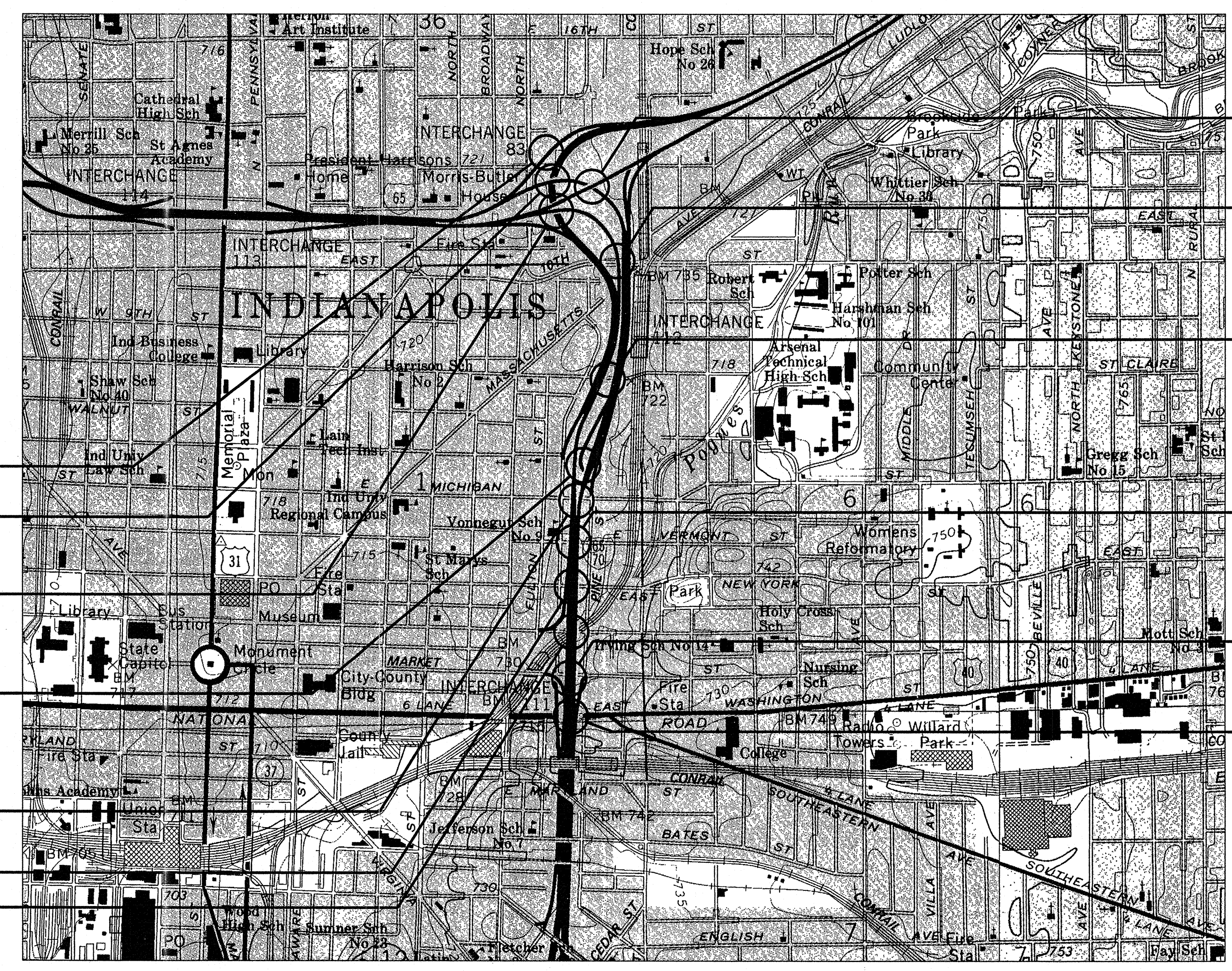
SHEET NO.	SUBJECT
1	Title Sheet
2	Index, Notes And Details



# INDIANA DEPARTMENT OF TRANSPORTATION

## BRIDGE PLANS FOR SPANS OVER 20 FEET

**PROJECT NO. IM-65-3(288) P.E.**



TRAFFIC DATA		I-70 NORTH SPLIT TO RURAL STREET	
A.A.D.T. 2003		210,380	V.P.D.
A.A.D.T. 2023		378,675	V.P.D.
D.H.V. 2023		34,081	V.P.H.
DIRECTIONAL DISTRIBUTION		50 %	
TRUCKS		5 % D.H.V.	
		5 % A.A.D.T.	

DESIGN DATA	
DESIGN SPEED	50 M.P.H.
PROJECT DESIGN CRITERIA	RECONSTRUCTION (FREEWAY)
FUNCTIONAL CLASSIFICATION	FREEWAY
RURAL/URBAN	URBAN (INTERMEDIATE)
TERRAIN	LEVEL
ACCESS CONTROL	FULL
ESALS	60,000,000

TRAFFIC DATA		I-65 SOUTH SPLIT TO NORTH SPLIT	
A.A.D.T. 2003		175,310	V.P.D.
A.A.D.T. 2023		315,560	V.P.D.
D.H.V. 2023		44,178	V.P.H.
DIRECTIONAL DISTRIBUTION		50 %	
TRUCKS		5 % D.H.V.	
		5 % A.A.D.T.	

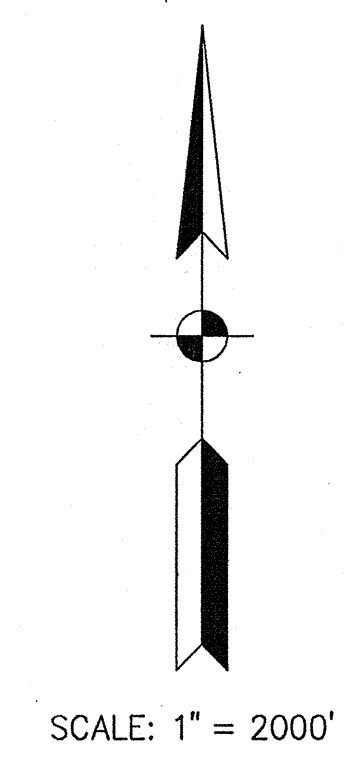
  

DESIGN DATA	
DESIGN SPEED	50 M.P.H.
PROJECT DESIGN CRITERIA	RECONSTRUCTION (FREEWAY)
FUNCTIONAL CLASSIFICATION	FREEWAY
RURAL/URBAN	URBAN (BUILT-UP)
TERRAIN	LEVEL
ACCESS CONTROL	FULL
ESALS	60,000,000

TRAFFIC DATA		I-65 NORTHBOUND & I-70 EASTBOUND	
A.A.D.T. 2003		70,580	V.P.D.
A.A.D.T. 2023		131,950	V.P.D.
D.H.V. 2023		13,195	V.P.H.
DIRECTIONAL DISTRIBUTION		50 %	
TRUCKS		5 % D.H.V.	
		5 % A.A.D.T.	

DESIGN DATA	
DESIGN SPEED	50 M.P.H.
PROJECT DESIGN CRITERIA	RECONSTRUCTION (FREEWAY)
FUNCTIONAL CLASSIFICATION	FREEWAY
RURAL/URBAN	URBAN (BUILT-UP)
TERRAIN	LEVEL
ACCESS CONTROL	FULL
ESALS	60,000,000



BRIDGE LENGTH :	(17 Total) 0.56 MI.
ROADWAY LENGTH :	5.70 MI.
TOTAL LENGTH :	6.26 MI.
MAX. GRADE :	4.0 %

INDIANA DEPARTMENT OF TRANSPORTATION  
STANDARD SPECIFICATIONS DATED 1999  
TO BE USED WITH THESE PLANS

REVISIONS	
DATE	SHEET NO.
1/10/03	Sheet No. 110

FEDERAL HIGHWAY ADMINISTRATION  
U.S. DEPT. OF TRANSPORTATION

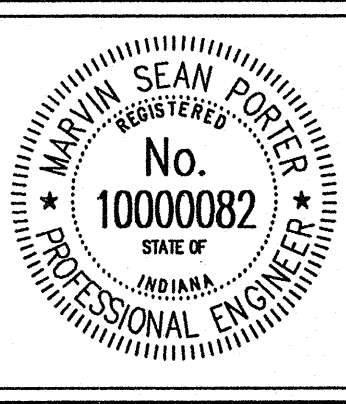
APPROVED: \_\_\_\_\_ DATE \_\_\_\_\_

DIVISION ADMINISTRATOR

PLANS PREPARED BY: American Consulting, Inc. (317)547-5580 PHONE NUMBER

CERTIFIED BY: *M. Sean Porter* July 31, 2002 DATE

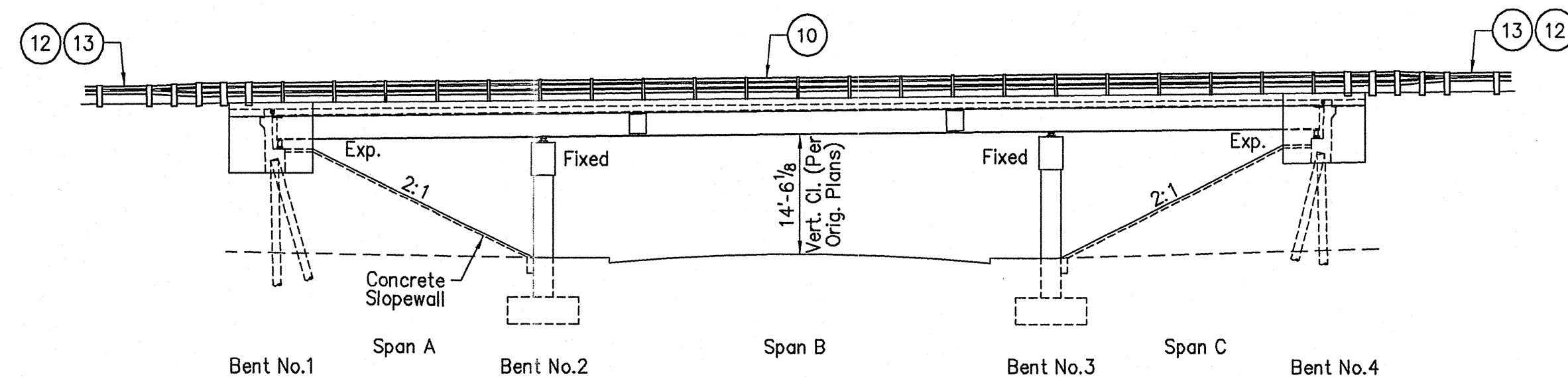
APPROVED FOR LETTING: *Philip J. K... 11/18/2002* CHIEF, DIVISION OF DESIGN DATE



BRIDGE FILE	SEE INDEX
DESIGNATION	SEE INDEX
SHEETS	1 of 155
CONTRACT	R-26488
PROJECT	IM-65-3(288)



Structure Built To A +0.92% Grade



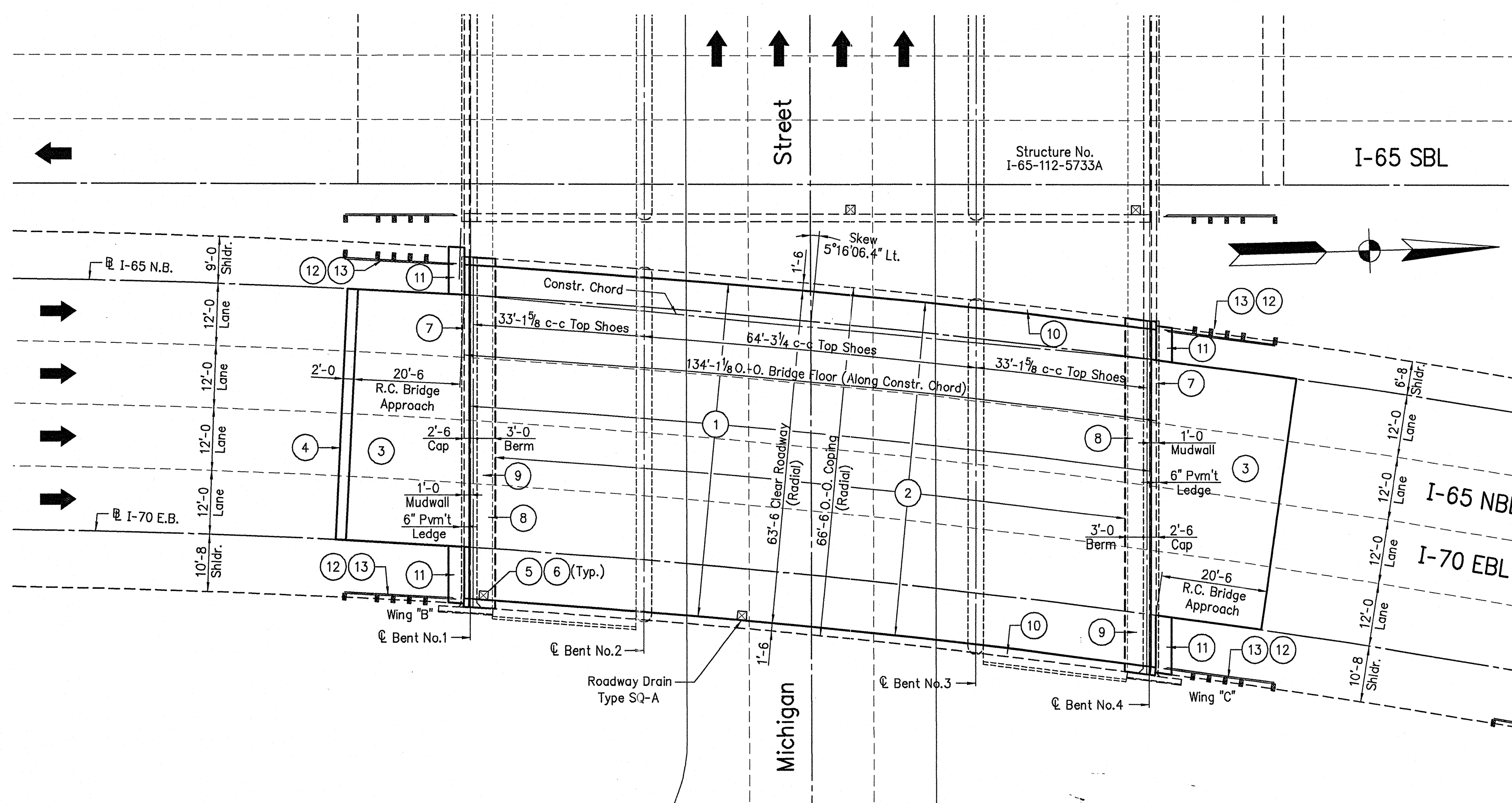
ELEVATION

LEGEND

- 1 Limits Of Bridge Deck Overlay.
- 2 Limits Of 1 1/2' Surface Removal And 1/4' Surface Milling.
- 3 Remove And Replace R.C. Bridge Approach And Tie To The Bridge.
- 4 Construct Bituminous Pavement Relief Joint.
- 5 Replace Deck Drain And Pipe With Roadway Drain Type OS-D.
- 6 Clean Drainage System And Remove Blockages.
- 7 Remove And Replace Mudwall Down To Top Of Pavement Ledge.
- 8 Remove 5'-0" Of Bridge Deck And Curb And Reconstruct With Open Joint. Add Shear Connectors At 9" Spacing To Existing Beams.
- 9 Tighten All Tie Rods And Replace One Missing Tie Rod At Bent No.4.
- 10 Replace Existing Aluminum Bridge Railing With Retrofit Thrie Beam Railing.
- 11 Remove And Replace 3'-0" Bituminous Shoulder.
- 12 Remove Existing Guardrail From The Approaches And Replace With W-Beam Guardrail. See Road Plans.
- 13 Install Modified Guardrail Transition Type TGT.

MATERIAL NOTES

- BRIDGE DECK OVERLAY : 1 3/4" Modified Portland Cement Concrete
- PAVEMENT RELIEF JOINT : 165 Lbs./Sys. HMA, Type C, Surface Over 1815 Lbs./Sys. HMA, Type C, Base
- BITUMINOUS SHOULDER: 165 Lbs./Sys. HMA, Type C, Surface Over 1155 Lbs./Sys. HMA, Type C, Base

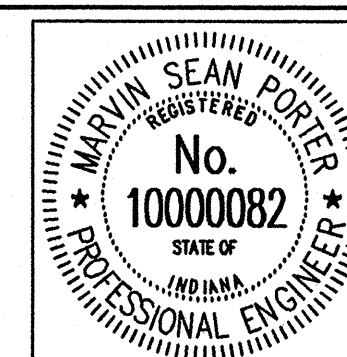


PLAN

NOTES :  
Plans of the existing structure are on file in the Bridge Department, Indiana Department Of Transportation as Bridge No. I-65-112-5732.

Bridge Deck Reconstruction

Continuous Composite Steel Beam Bridge  
I-65 N.B.L. Over Michigan Street  
3 Spans : 33'-1 7/8" ; 64'-3 1/4" ; 33'-1 7/8"  
Skew : Varies  
Clear Roadway : 63'-6"

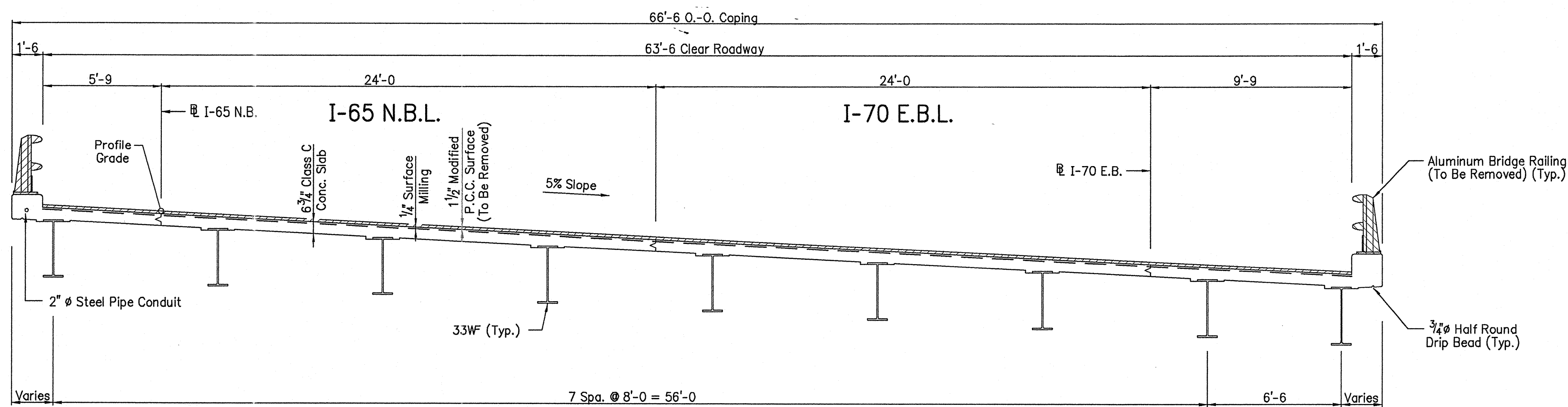


RECOMMENDED FOR APPROVAL *M. Sean Porter* July 31, 2002  
DESIGN ENGINEER DATE  
DESIGNED: \_\_\_\_\_ DRAWN: DDK 4/18/01  
CHECKED: \_\_\_\_\_ CHECKED: SA 2/25/02

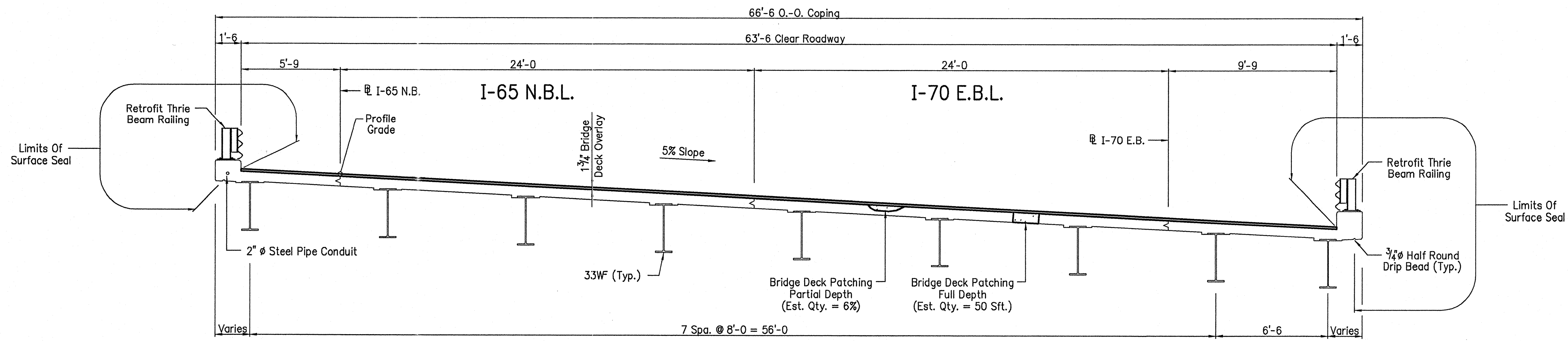
INDIANA  
DEPARTMENT OF TRANSPORTATION

GENERAL PLAN

HORIZONTAL SCALE 1/16" = 1'-0"	BRIDGE FILE I-65-112-5732A
VERTICAL SCALE	DESIGNATION 0065815
SURVEY BOOK	SHEETS 65 of 155
CONTRACT R-26488	PROJECT IM-65-3(288)



EXISTING TYPICAL SECTION

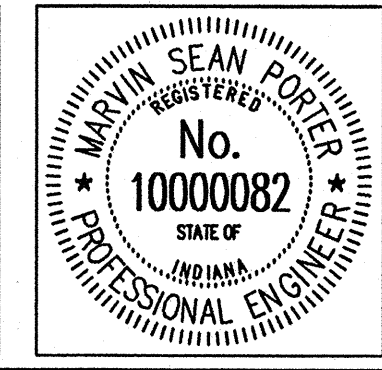


PROPOSED TYPICAL SECTION

NOTES:  
Plans of the existing structure are on file in the Bridge Department, Indiana Department Of Transportation as Bridge No. I-65-112-5732.

Bridge Deck Reconstruction  
Continuous Composite Steel Beam Bridge  
I-65 N.B.L. Over Michigan Street  
3 Spans : 33'-1 7/8"; 64'-3 3/4"; 33'-1 7/8"  
Skew : Varies  
Clear Roadway : 63'-6"

LYNHUBBERS 7/1/02 1:39:31 PM R:\0000\001\206\072.dwg COPY/PRINT 10/6/2002  
 EDIT DATE: 07/25/02 10:57:10 EDITED BY: TLH-SIT DWG FILE: \\s010\apps\001\206\072.dwg  
 PLOT SCALE: 1:48



RECOMMENDED FOR APPROVAL *m. Sean Porter* July 31, 2002  
DESIGN ENGINEER DATE

DESIGNED: \_\_\_\_\_ DRAWN: DDK 4/19/01  
CHECKED: \_\_\_\_\_ CHECKED: SA 2/25/02

INDIANA  
DEPARTMENT OF TRANSPORTATION

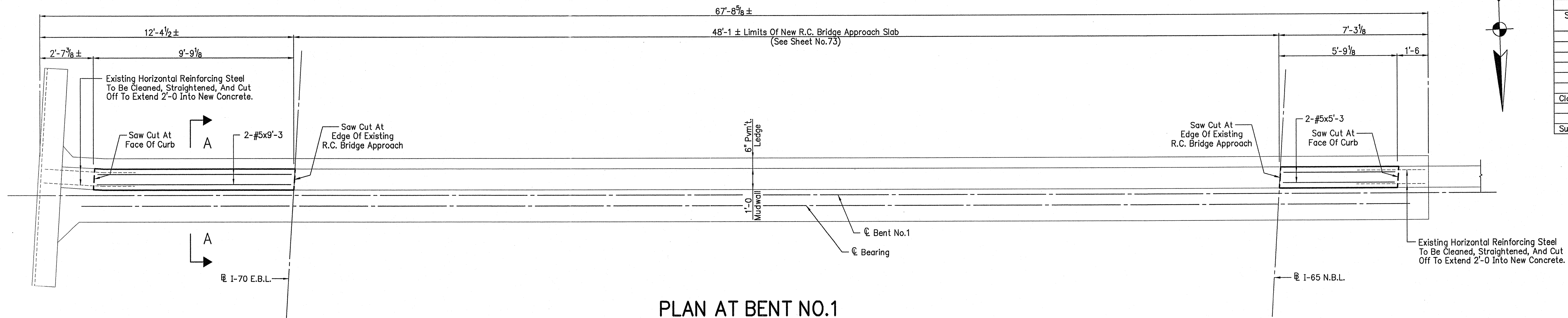
GENERAL PLAN DETAILS

HORIZONTAL SCALE 1/4" = 1'-0"	BRIDGE FILE I-65-112-5732A
VERTICAL SCALE	DESIGNATION 0065615
SURVEY BOOK	SHEETS 66 of 155
CONTRACT R-26488	PROJECT IM-65-3(288)

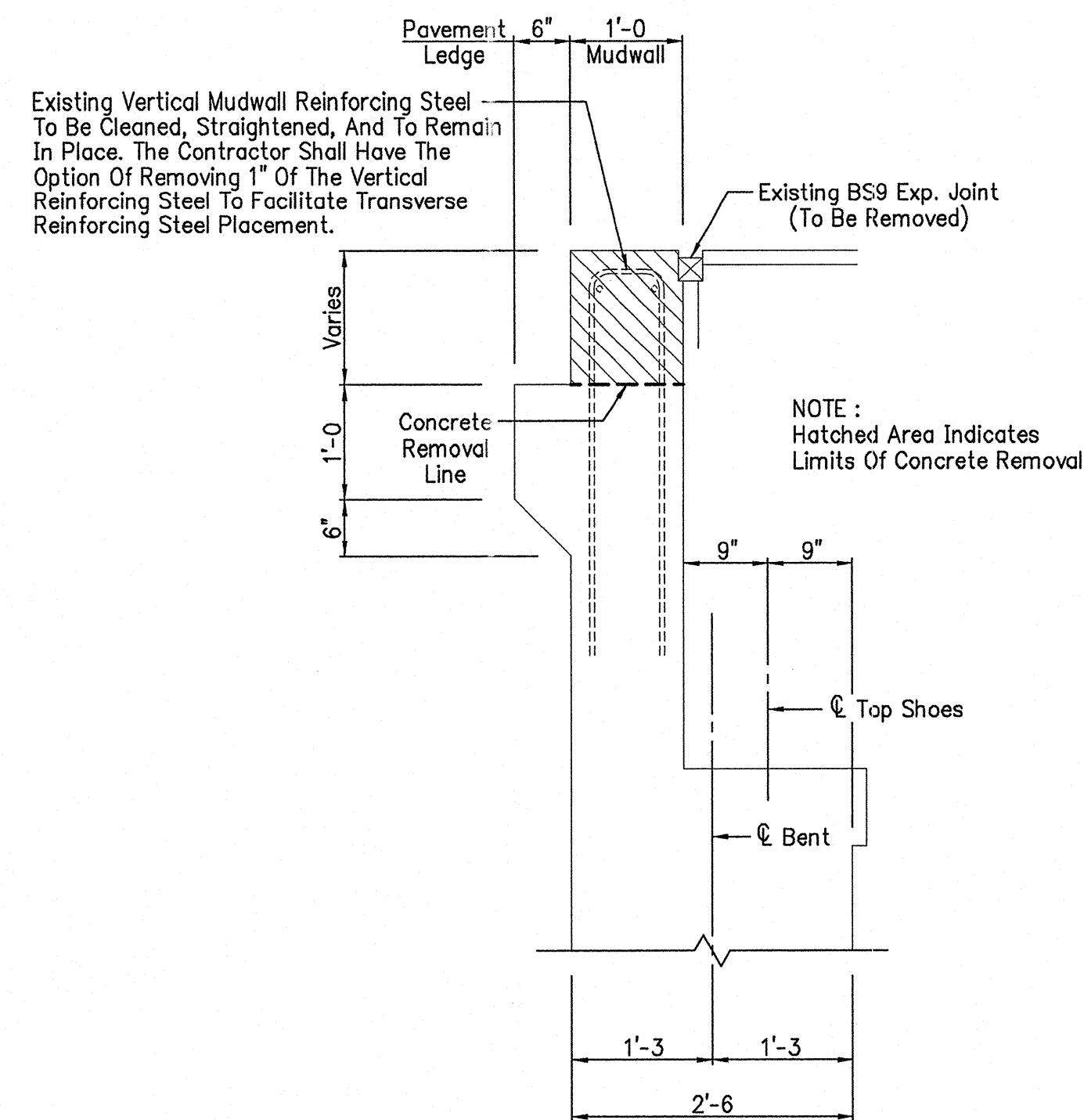


# BENT NO.1 BILL OF MATERIALS

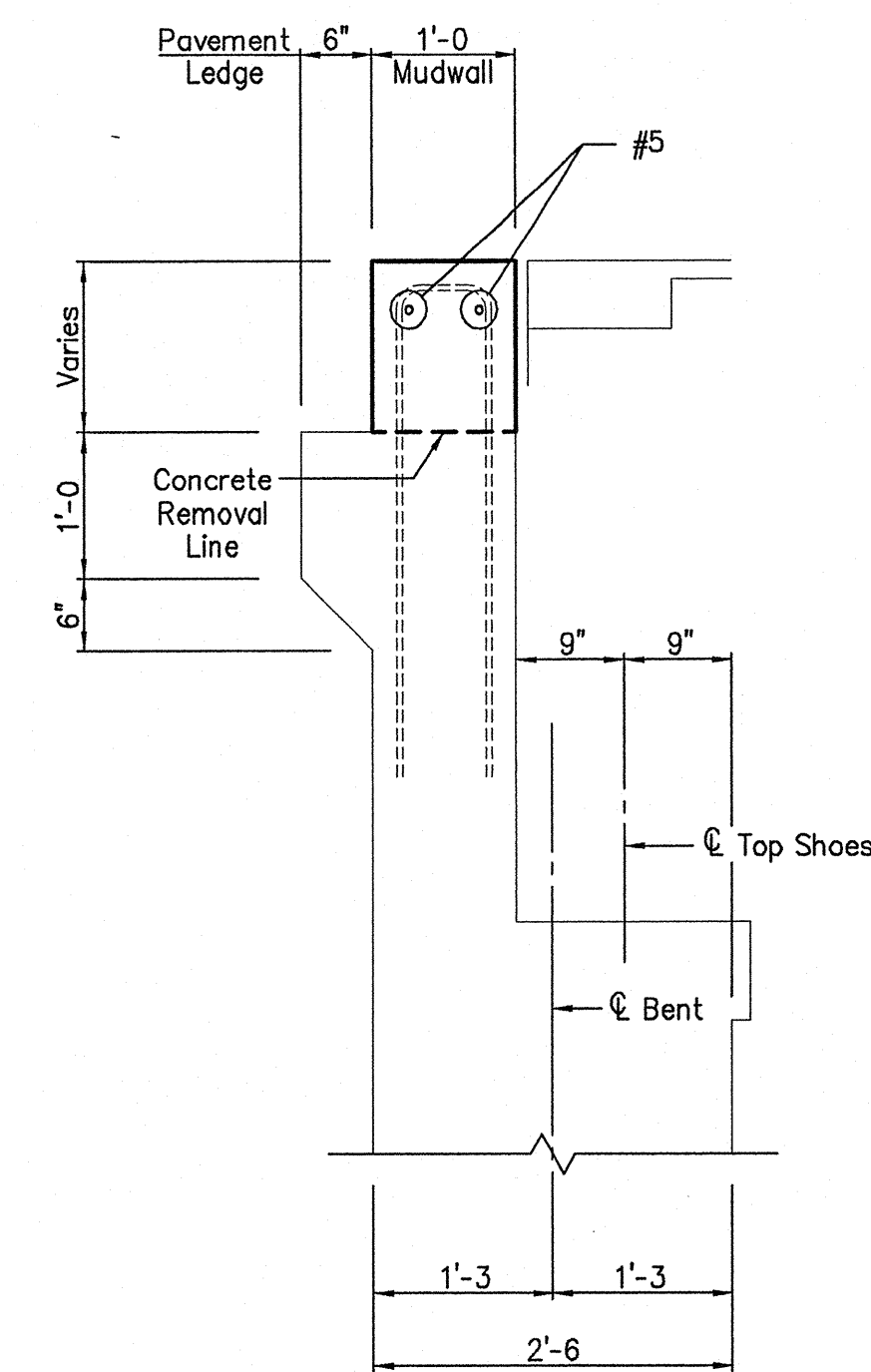
Plain Reinforcing Steel			
Size And Mark	No. Of Bars	Length (Feet)	Weight (Lbs.)
#5	2	9'-3"	
#5	2	5'-3"	
Total Plain Reinforcing Steel			30
Concrete			
Class C In Superstructure			0.7 Cys.
Miscellaneous			
Surface Seal			590 Sft.



PLAN AT BENT NO.1



EXISTING SECTION A-A  
Scale- 3/4" = 1'-0"



PROPOSED SECTION A-A  
Scale- 3/4" = 1'-0"

NOTES:  
Top and front face of mudwall, top and front face of cap and all exposed surfaces of wingwall to be surface sealed.  
For reinforcing bar notes, see Standard Drawing E703-BRST-01.

LYNH:RIGGERS 7/11/02 1:39:26 PM I:\2000\05012\206\BOM.dwg COPYRIGHT 1966-2000  
 EDIT DATE: 07/25/02 14:05:08 EDITED BY: TJH - STI DWG FILE: I:\2010\05012\206\BOM.dwg  
 PLOT SCALE: 1:32

RECOMMENDED FOR APPROVAL *M. Sean Porter* July 31, 2002  
 DESIGN ENGINEER DATE  
 DESIGNED: DRAWN: DSH 11/15/01  
 CHECKED: CHECKED: SA 2/25/02

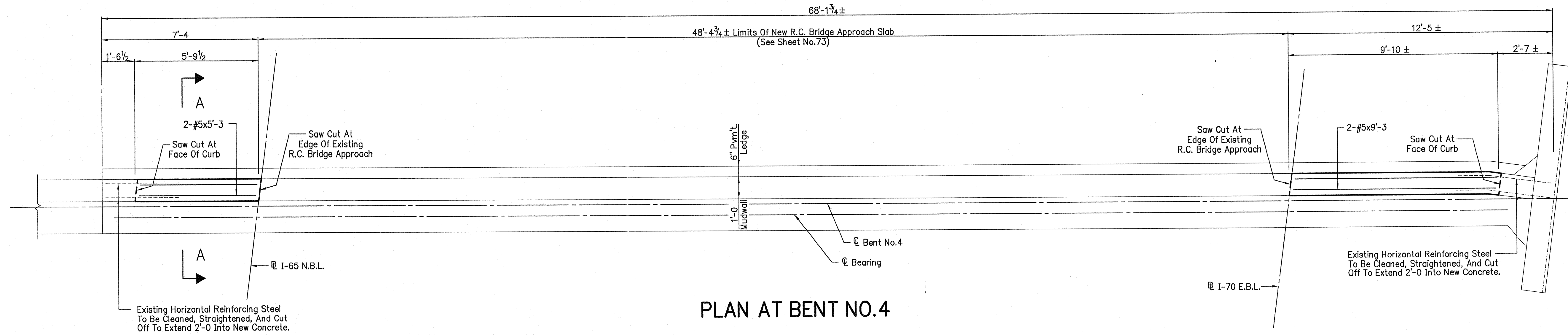
**INDIANA**  
**DEPARTMENT OF TRANSPORTATION**  
**BENT NO.1 DETAILS**

HORIZONTAL SCALE 3/8" = 1'-0, U.N.	BRIDGE FILE I-65-112-5732A
VERTICAL SCALE	DESIGNATION 0065615
SURVEY BOOK	SHEETS 67 of 155
CONTRACT R-26488	PROJECT IM-65-3(288)

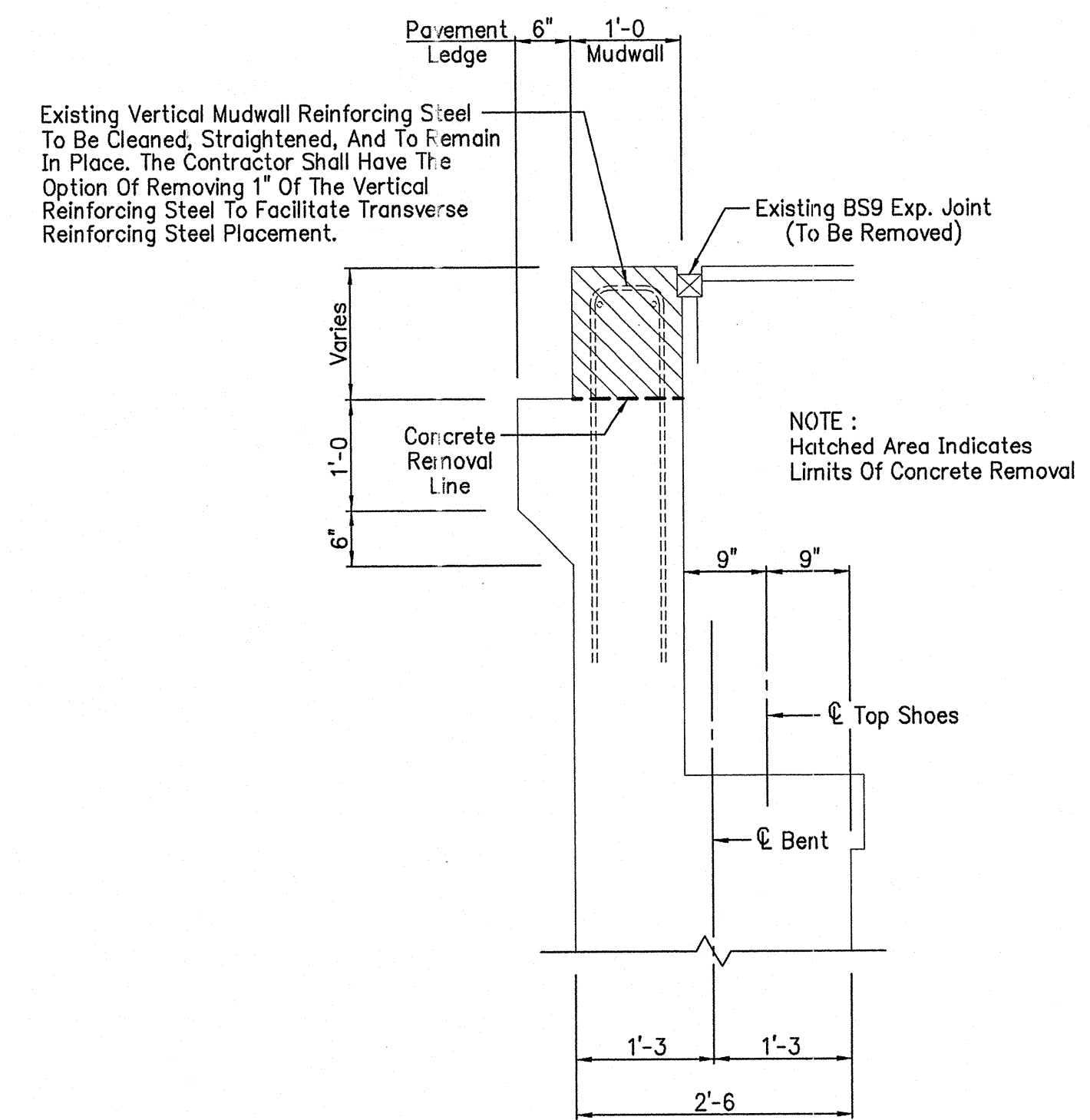


# BENT NO. 4 BILL OF MATERIALS

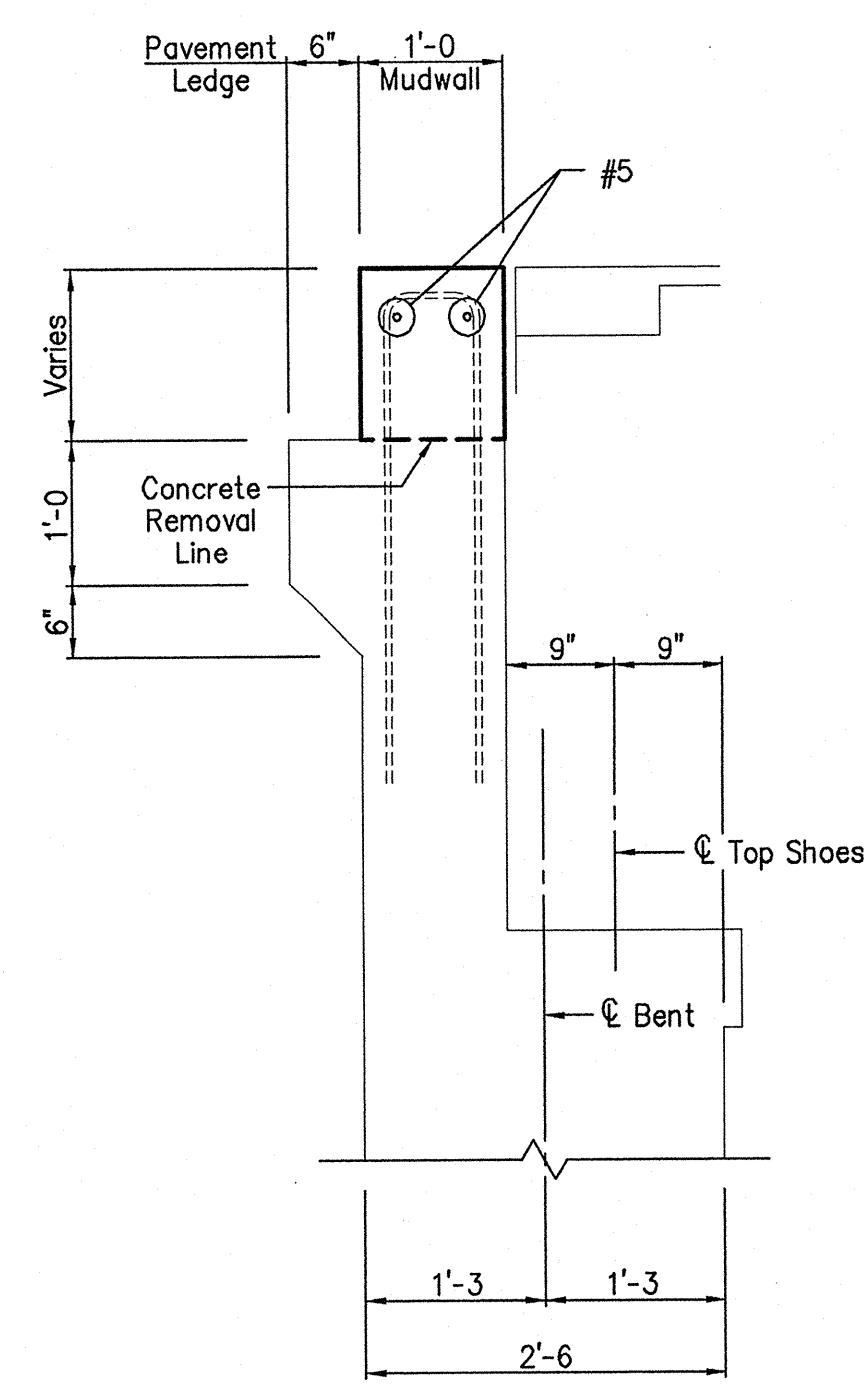
Plain Reinforcing Steel			
Size And Mark	No. Of Bars	Length (Feet)	Weight (Lbs.)
#5	2	9'-3"	
#5	2	5'-3"	
Total Plain Reinforcing Steel			30
Concrete			
Class C In Superstructure			0.7 Cys.
Miscellaneous			
Surface Seal			590 Sft.



PLAN AT BENT NO. 4



EXISTING SECTION A-A  
Scale- 3/4" = 1'-0"



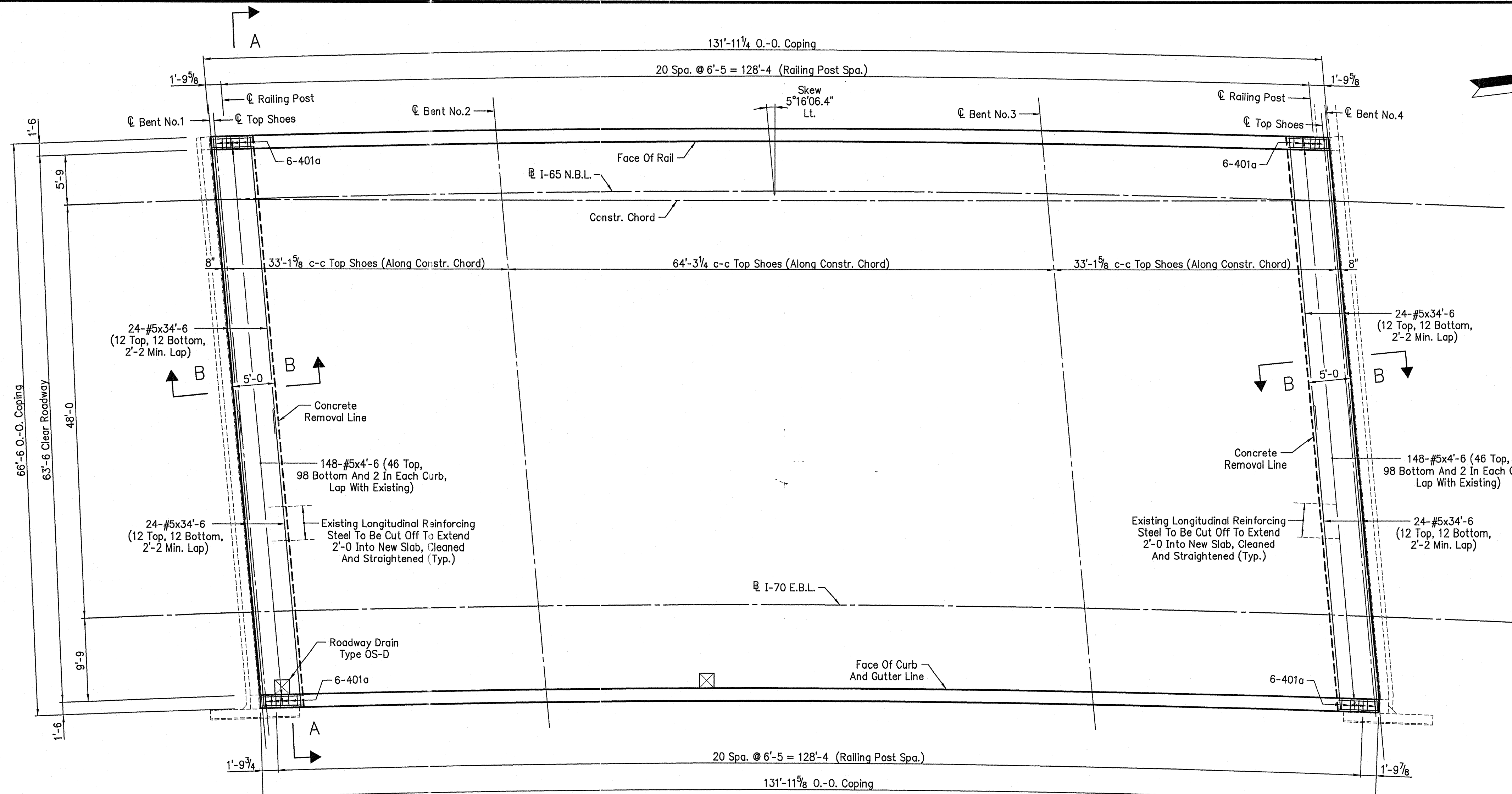
PROPOSED SECTION A-A  
Scale- 3/4" = 1'-0"

NOTES:  
Top and front face of mudwall, top and front face of cap and all exposed surfaces of wingwall to be surface sealed.  
For reinforcing bar notes, see Standard Drawing E703-BRST-01.

L:\WORK\DESIGN\2002\0725\02\1-65\1-65-3(288).DWG  
 DATE: 07/25/02 14:06:03  
 PLOT SCALE: 1:32  
 1/25/02 1:31 PM 2002/07/25 14:06:03  
 COPYRIGHT 1996-2002

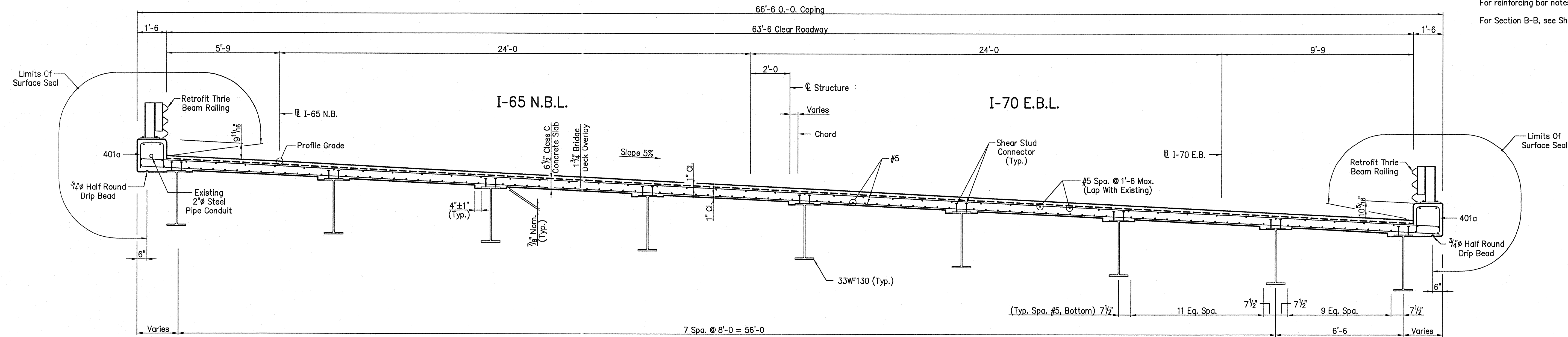
	RECOMMENDED FOR APPROVAL <i>M. Sean Porter</i> July 31, 2002 DESIGN ENGINEER DATE	<b>INDIANA DEPARTMENT OF TRANSPORTATION</b>	HORIZONTAL SCALE 3/8" = 1'-0, U.N.	BRIDGE FILE I-65-112-5732A
	DESIGNED: _____ DRAWN: DSH 11/15/01 CHECKED: _____ CHECKED: SA 2/25/02		<b>BENT NO. 4 DETAILS</b>	VERTICAL SCALE _____
			SURVEY BOOK _____	SHEETS 68 of 155
			CONTRACT R-26488	PROJECT IM-65-3(288)



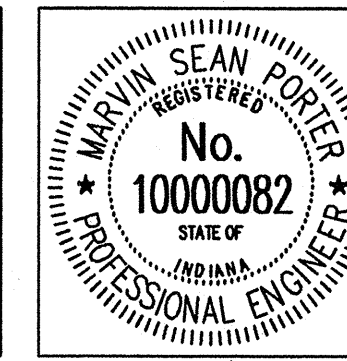


PLAN

NOTES:  
 All reinforcing steel to be plain.  
 For reinforcing bar notes, see Standard Drawing E703-BRST-01.  
 For Section B-B, see Sheet No.72.



SECTION A-A  
 Scale - 3/8" = 1'-0"



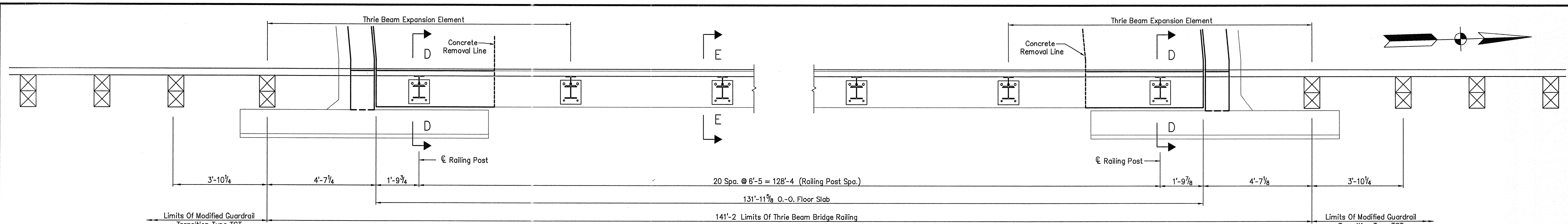
RECOMMENDED FOR APPROVAL *M. Sean Porter* July 31, 2002  
 DESIGN ENGINEER DATE  
 DESIGNED: DRAWN: DSH 11/9/01  
 CHECKED: CHECKED: SA 2/25/02

**INDIANA**  
**DEPARTMENT OF TRANSPORTATION**  
**SUPERSTRUCTURE DETAILS**

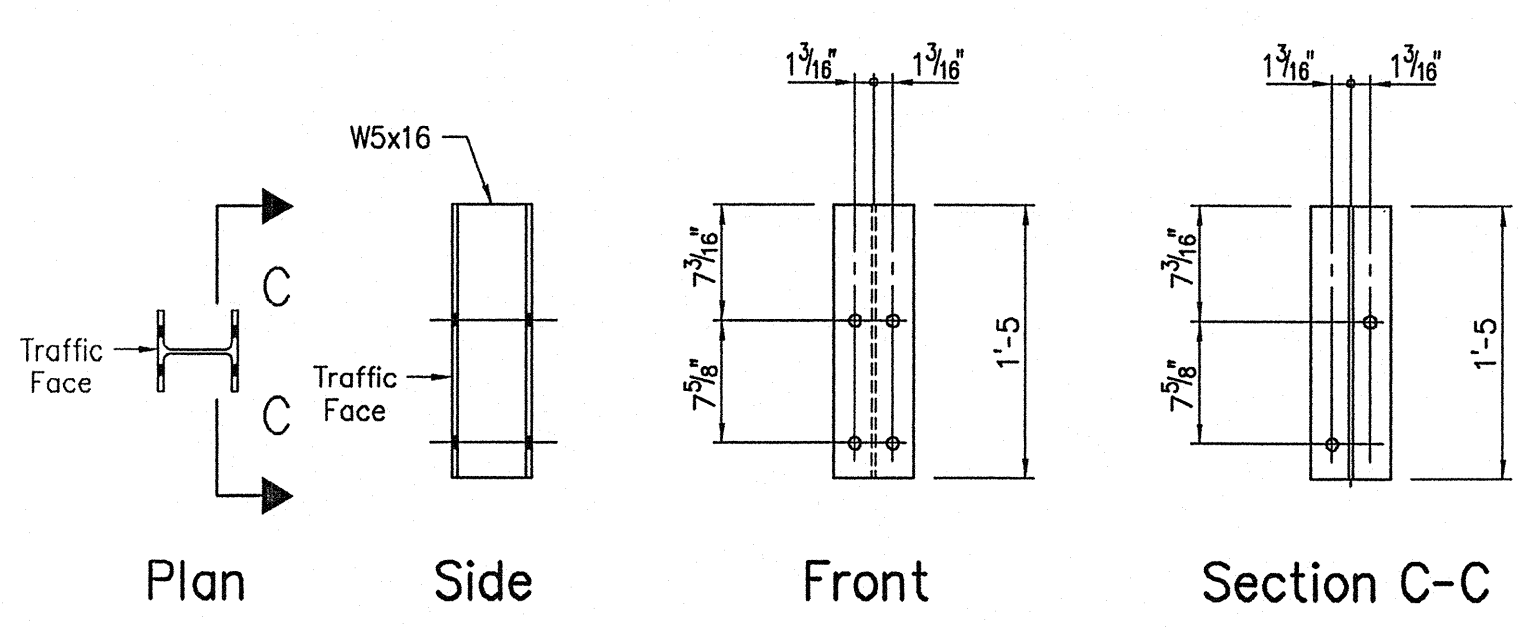
HORIZONTAL SCALE 1/8" = 1'-0, U.N.	BRIDGE FILE I-65-112-5732A
VERTICAL SCALE	DESIGNATION 0065615
SURVEY BOOK	SHEETS 69 of 155
CONTRACT R-26488	PROJECT IM-65-3(288)

LYN/HA/DES 7/31/02 1:30:16 PM I:\2000\05032306\BRIDGE\00710301.DWG  
 PLOT SCALE: 1:36  
 EDT DATE: 07/31/02 08:42:33 EDITED BY: TJA - ST1 DWG FILE: I:\2000\05032306\BRIDGE\00710301.DWG

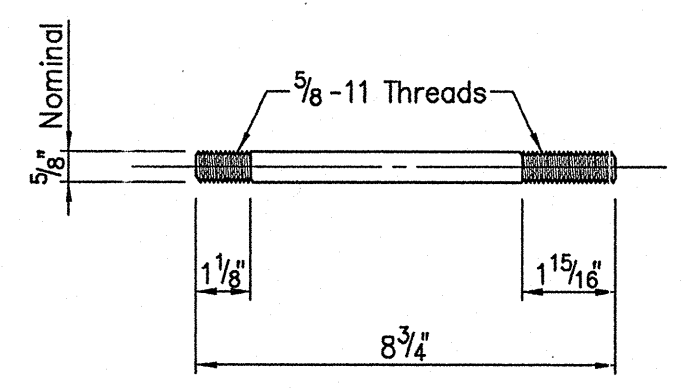
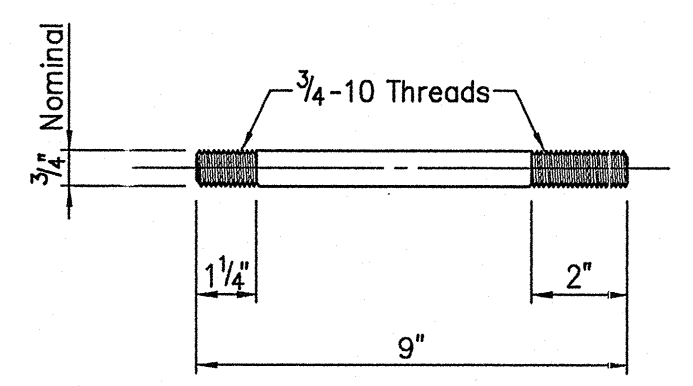




**PARTIAL PLAN - EAST COPING**

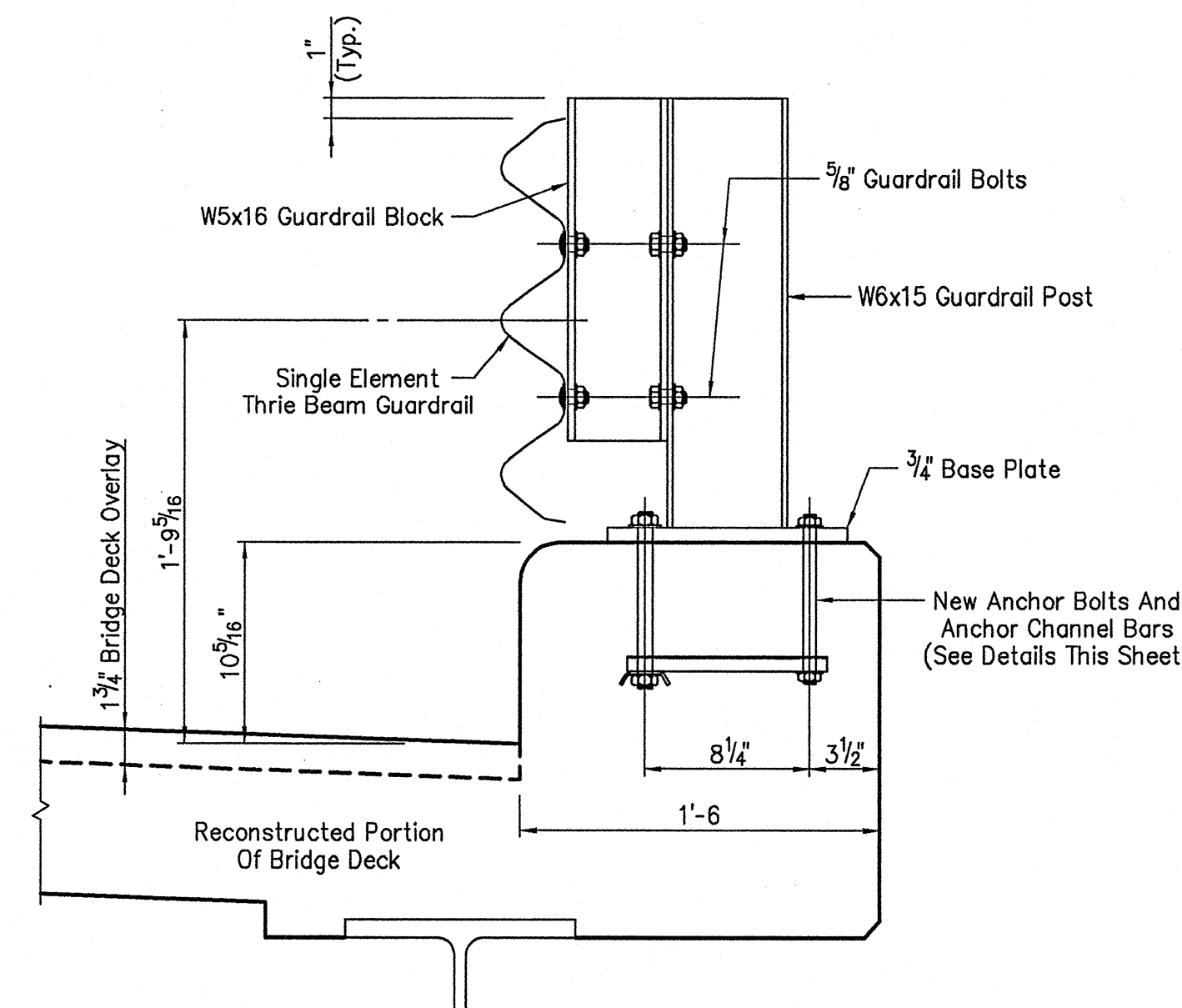


**W5x16 GUARDRAIL BLOCK DETAILS**



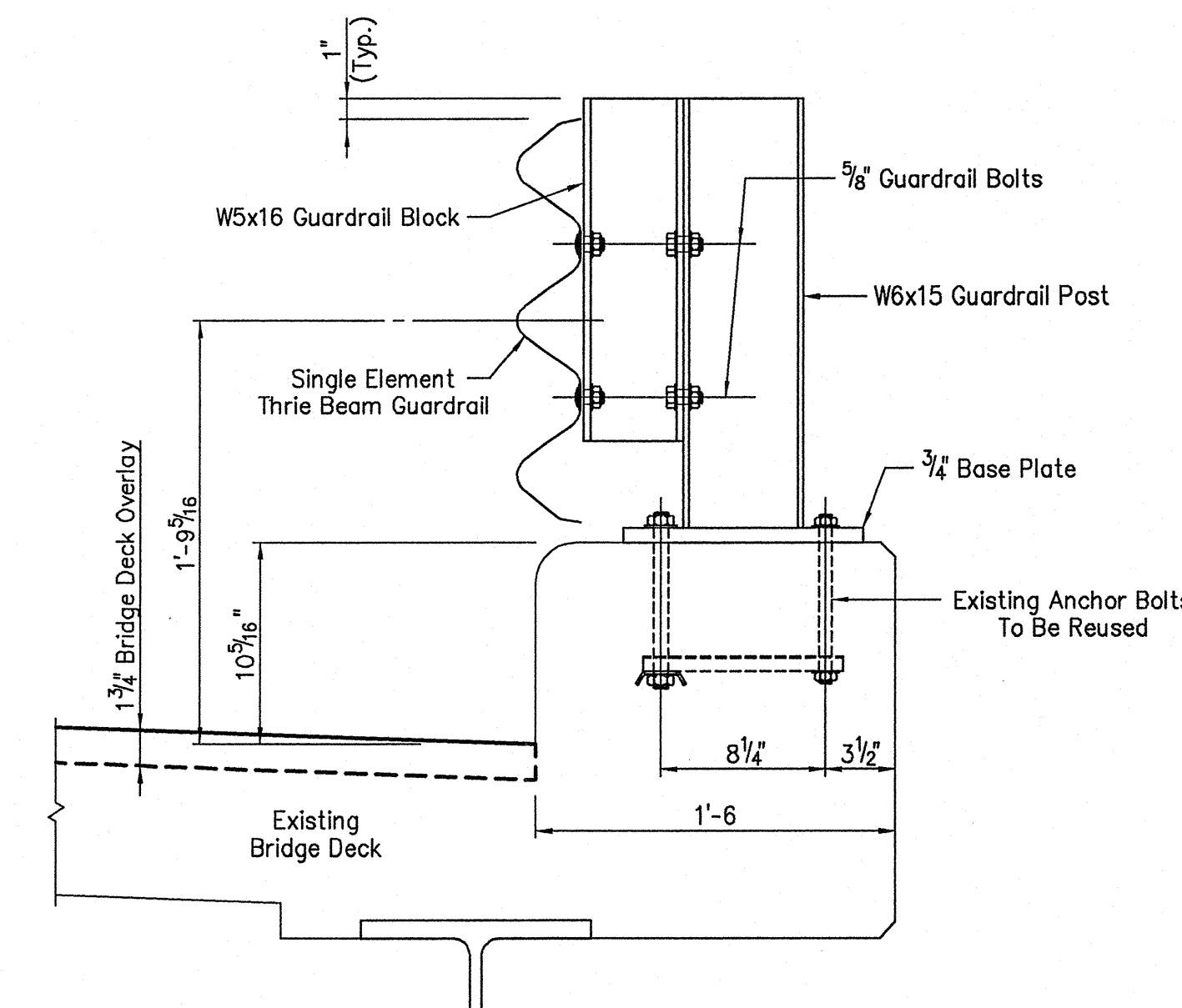
**ANCHOR BOLTS**

Scale - 3" = 1'-0"



**SECTION D-D**

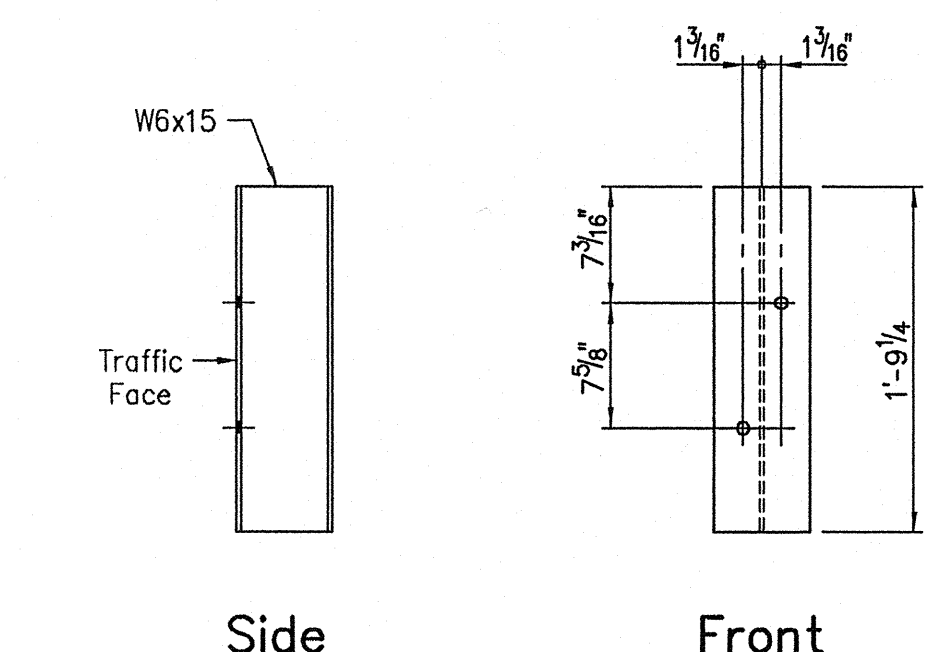
Scale - 1 1/2" = 1'-0"



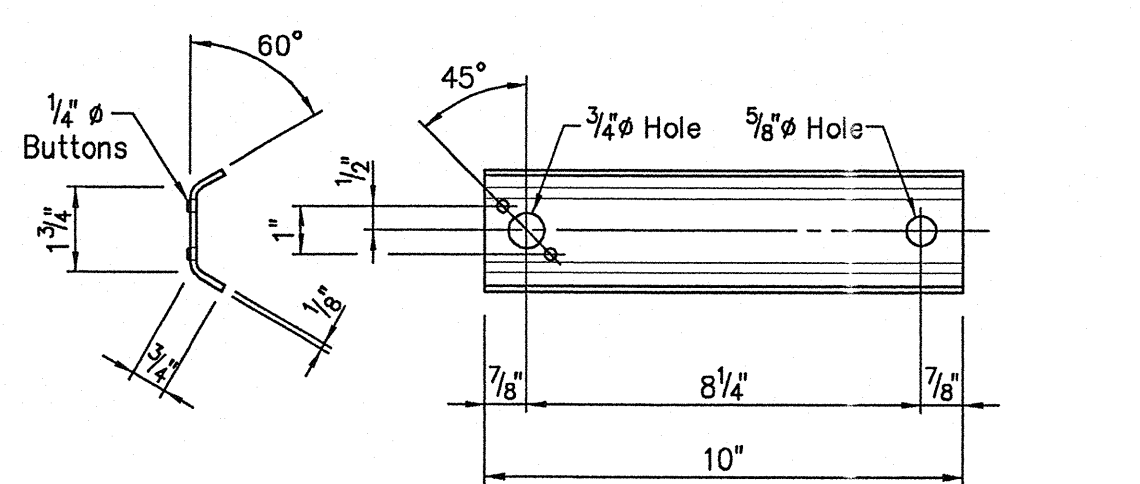
**SECTION E-E**

Scale - 1 1/2" = 1'-0"

NOTE: For Thrie Beam Section, see Standard Drawing E601-TBGC-01.

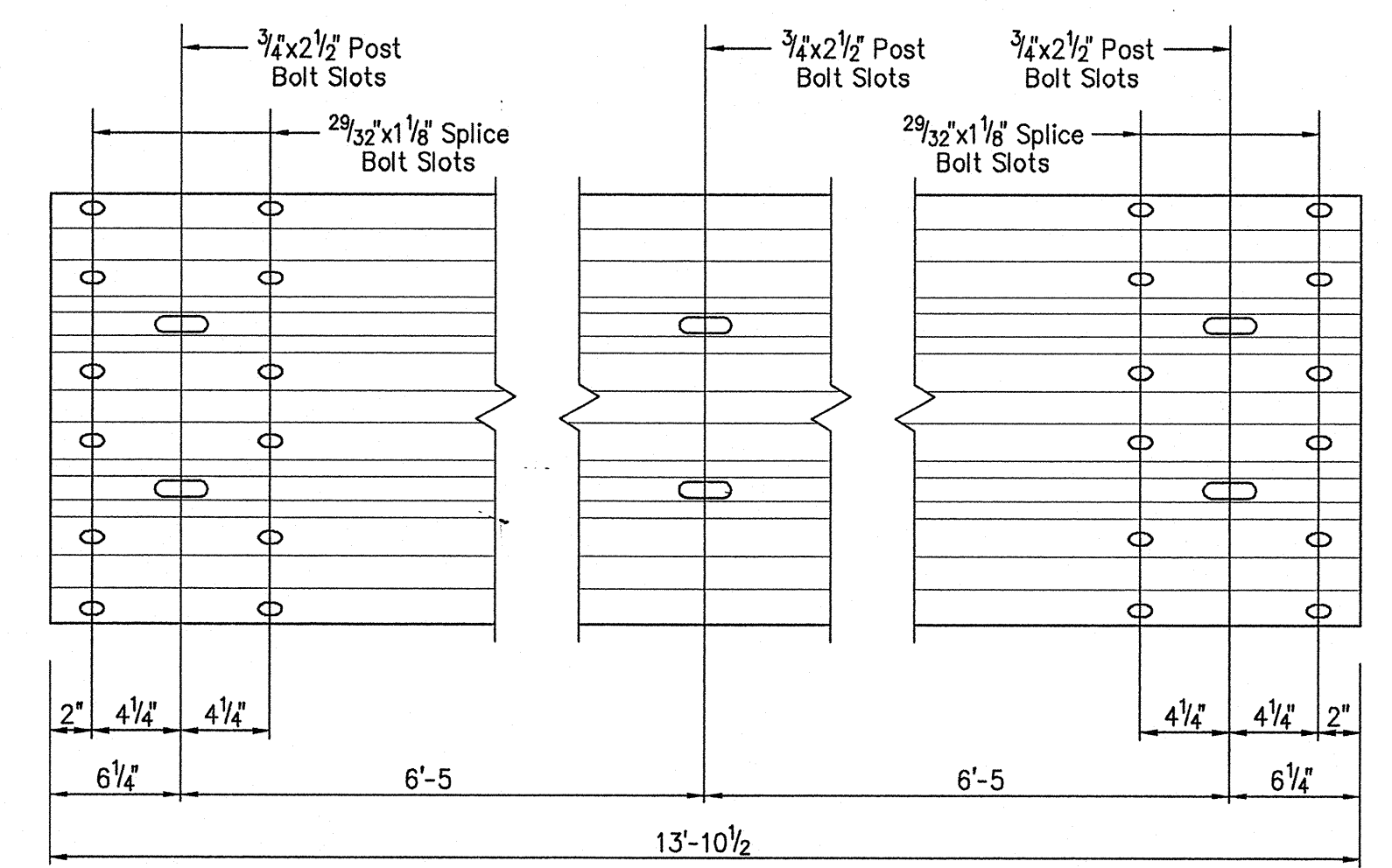


**W6x15 GUARDRAIL POST DETAILS**



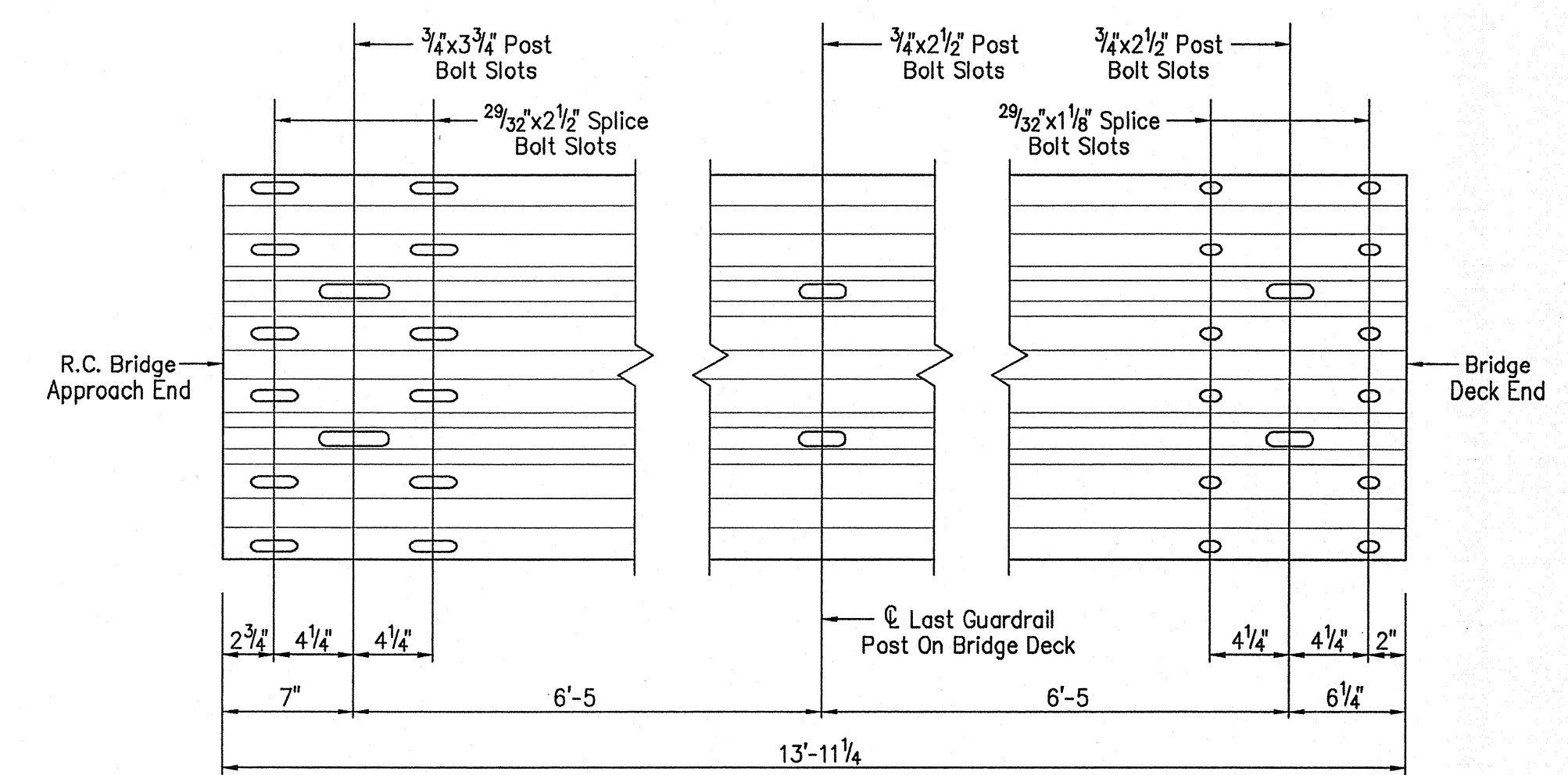
**ANCHOR CHANNEL BARS**

Scale - 3" = 1'-0"



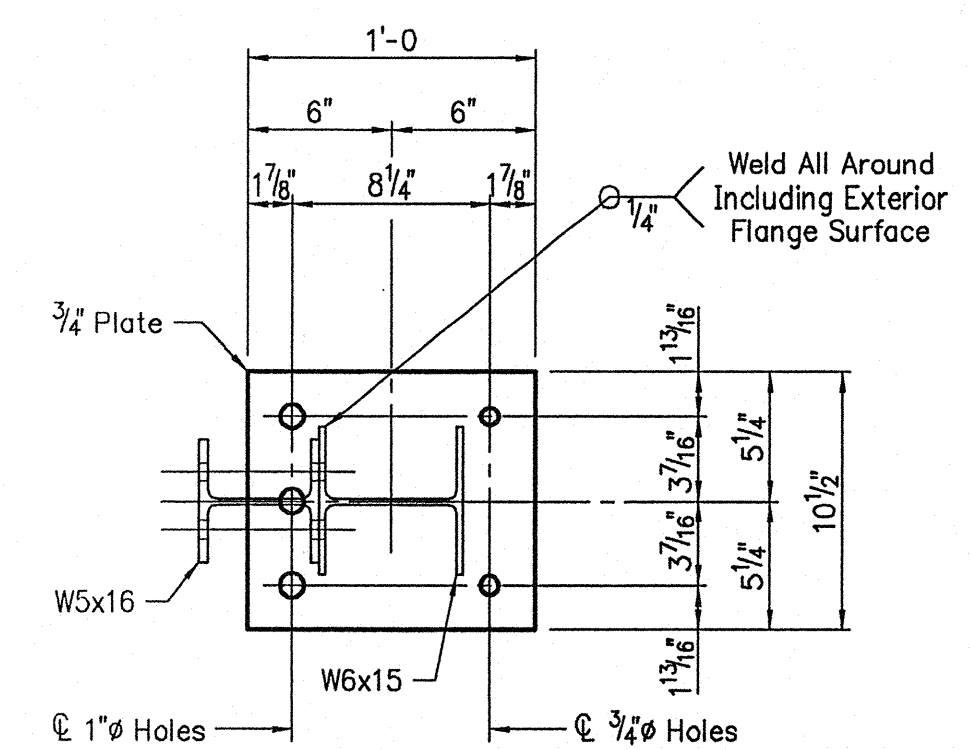
**THRIE BEAM ELEVATION**

Scale - 1 1/2" = 1'-0"



**THRIE BEAM EXPANSION ELEMENT ELEVATION**

Scale - 1 1/2" = 1'-0"



**BASE PLATE DETAIL**

Scale - 1 1/2" = 1'-0"

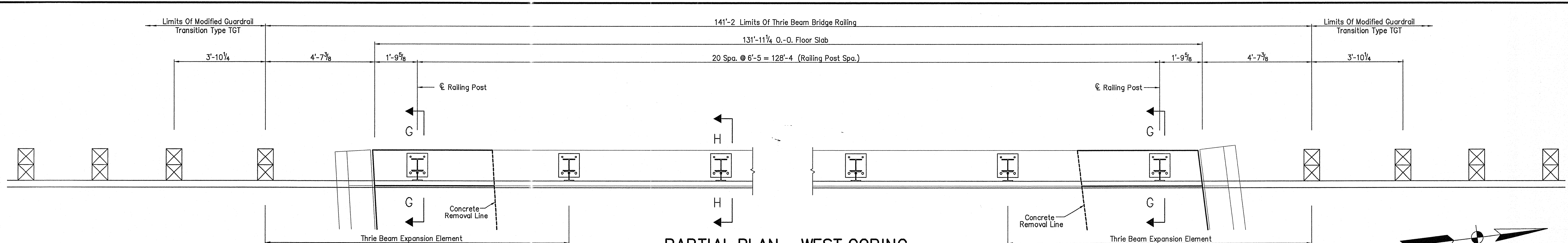
L:\WORKBOOKS\70103\_1381174\_1200000932206101.dwg COPY DATE: 07/25/02 13:56:08 EDITED BY: TJH - STI DWG FILE: V:\2001\070103\1200000932206101.dwg  
 PLOT SCALE: 1:24,000  
 L:\WORKBOOKS\70103\_1381174\_1200000932206101.dwg COPY DATE: 07/25/02 13:56:08 EDITED BY: TJH - STI DWG FILE: V:\2001\070103\1200000932206101.dwg

RECOMMENDED FOR APPROVAL *M. Sean Porter* July 31, 2002  
 DESIGN ENGINEER DATE  
 DESIGNED: DRAWN: RRC 11/7/01  
 CHECKED: CHECKED: TLH 11/7/01

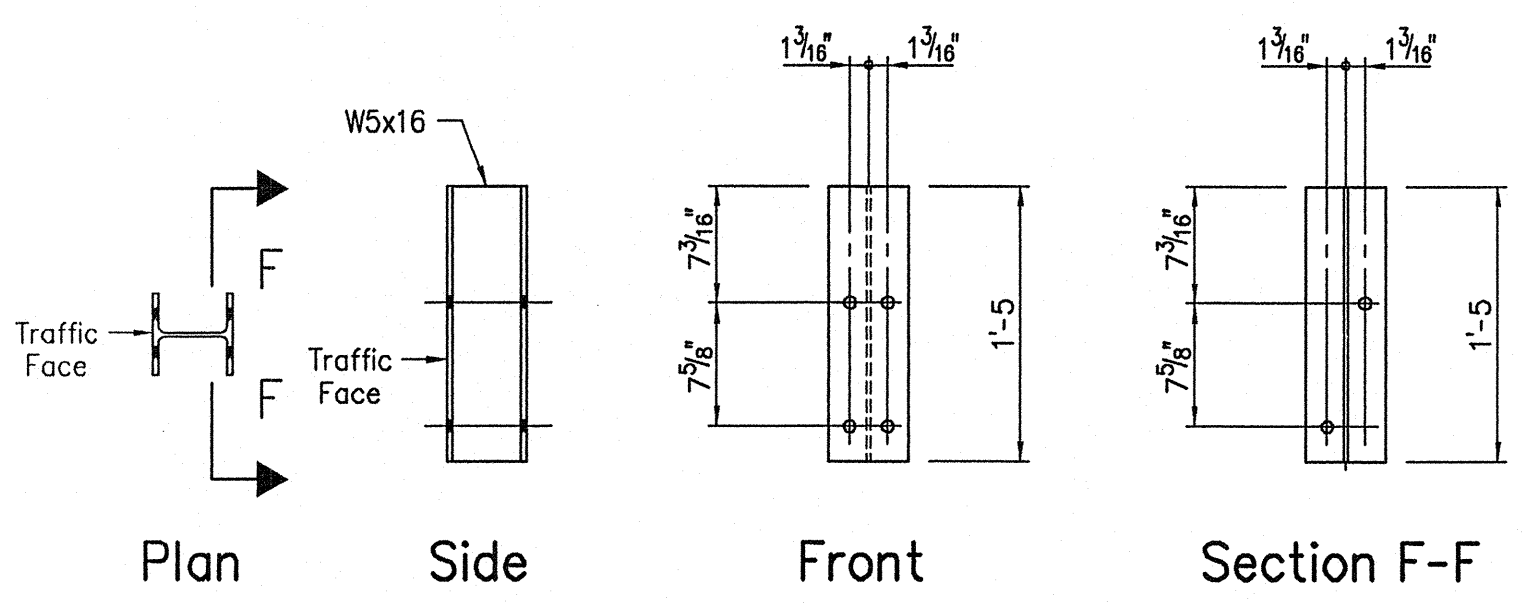
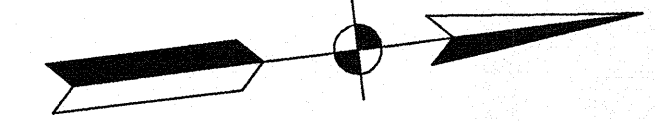
**INDIANA DEPARTMENT OF TRANSPORTATION**  
**SUPERSTRUCTURE DETAILS**

HORIZONTAL SCALE 1/2" = 1'-0, U.N.	BRIDGE FILE I-65-112-5732A
VERTICAL SCALE	DESIGNATION 0065615
SURVEY BOOK	SHEETS 70 of 155
CONTRACT R-26488	PROJECT IM-65-3(288)

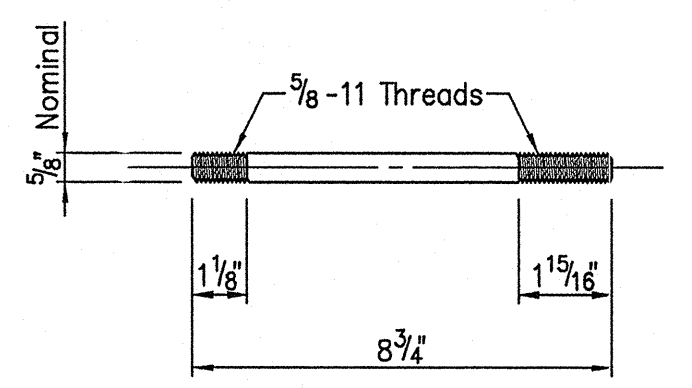
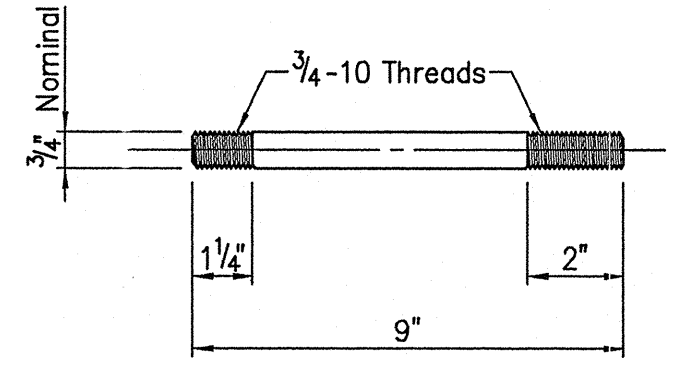




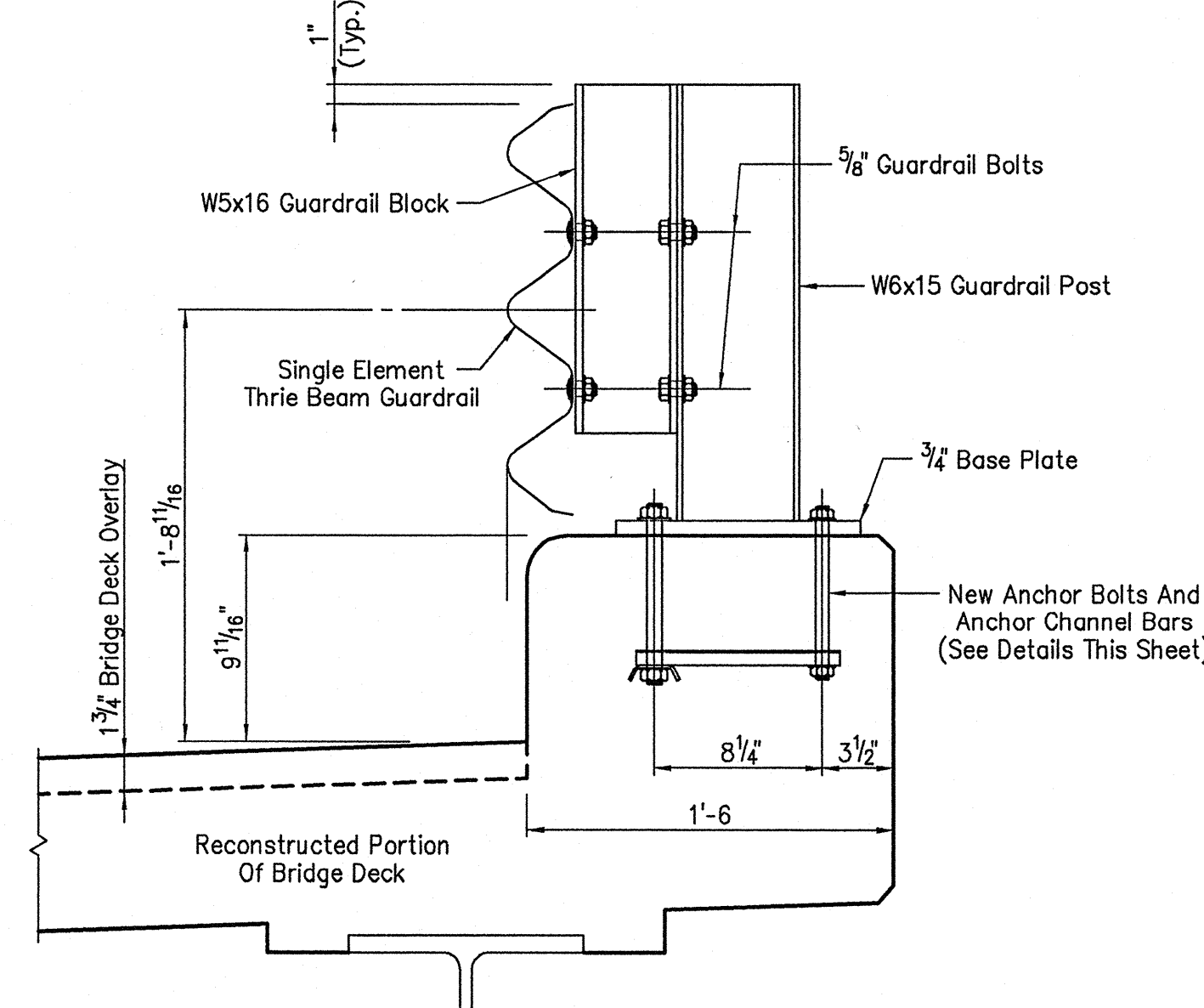
PARTIAL PLAN - WEST COPING



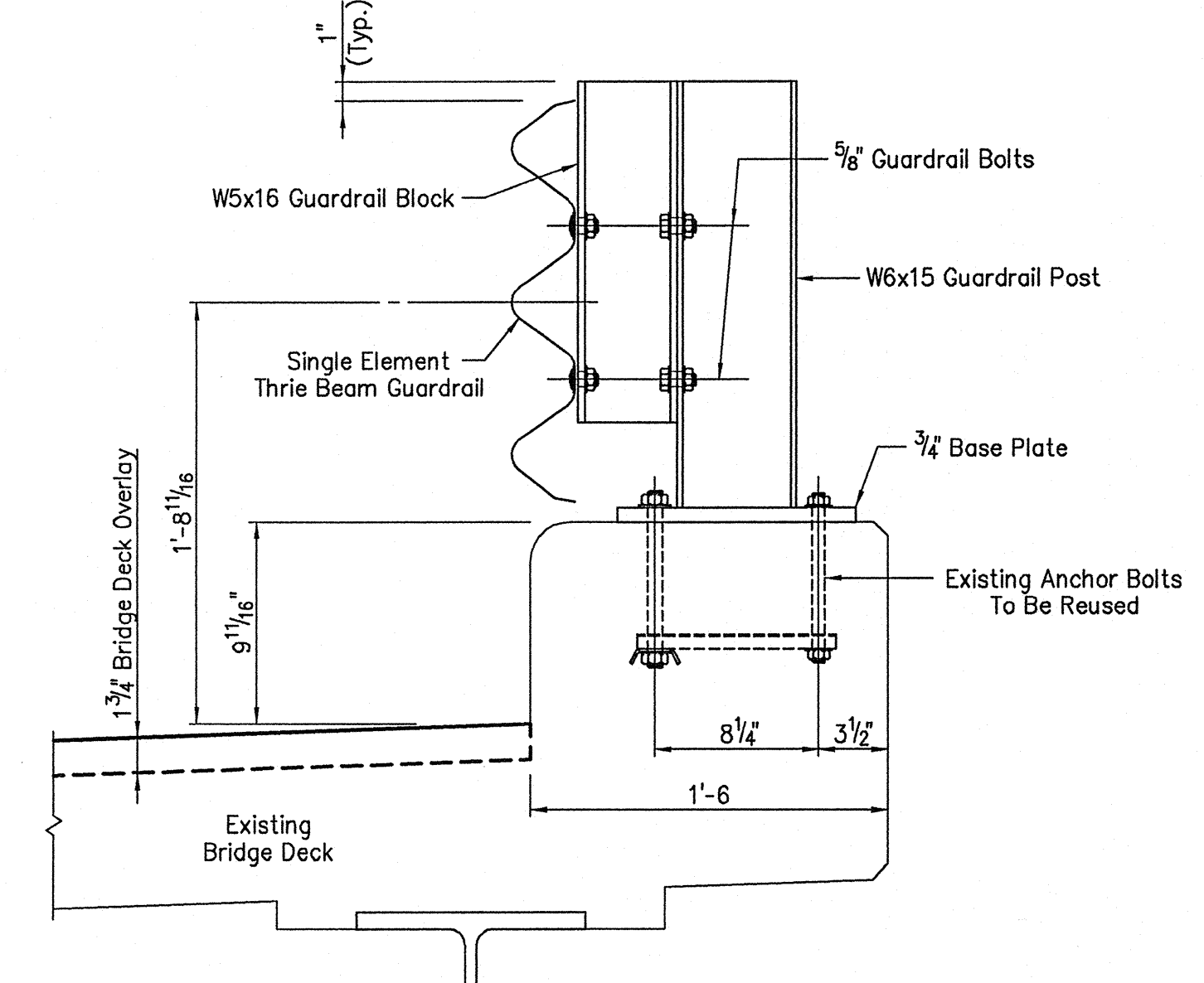
W5x16 GUARDRAIL BLOCK DETAILS  
Scale - 1" = 1'-0



ANCHOR BOLTS  
Scale - 3" = 1'-0

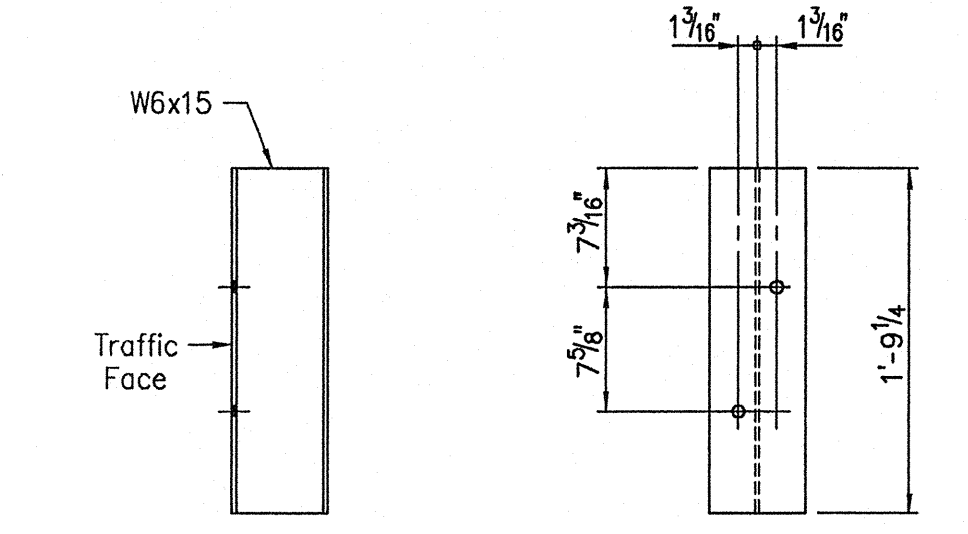


SECTION G-G  
Scale - 1 1/2" = 1'-0

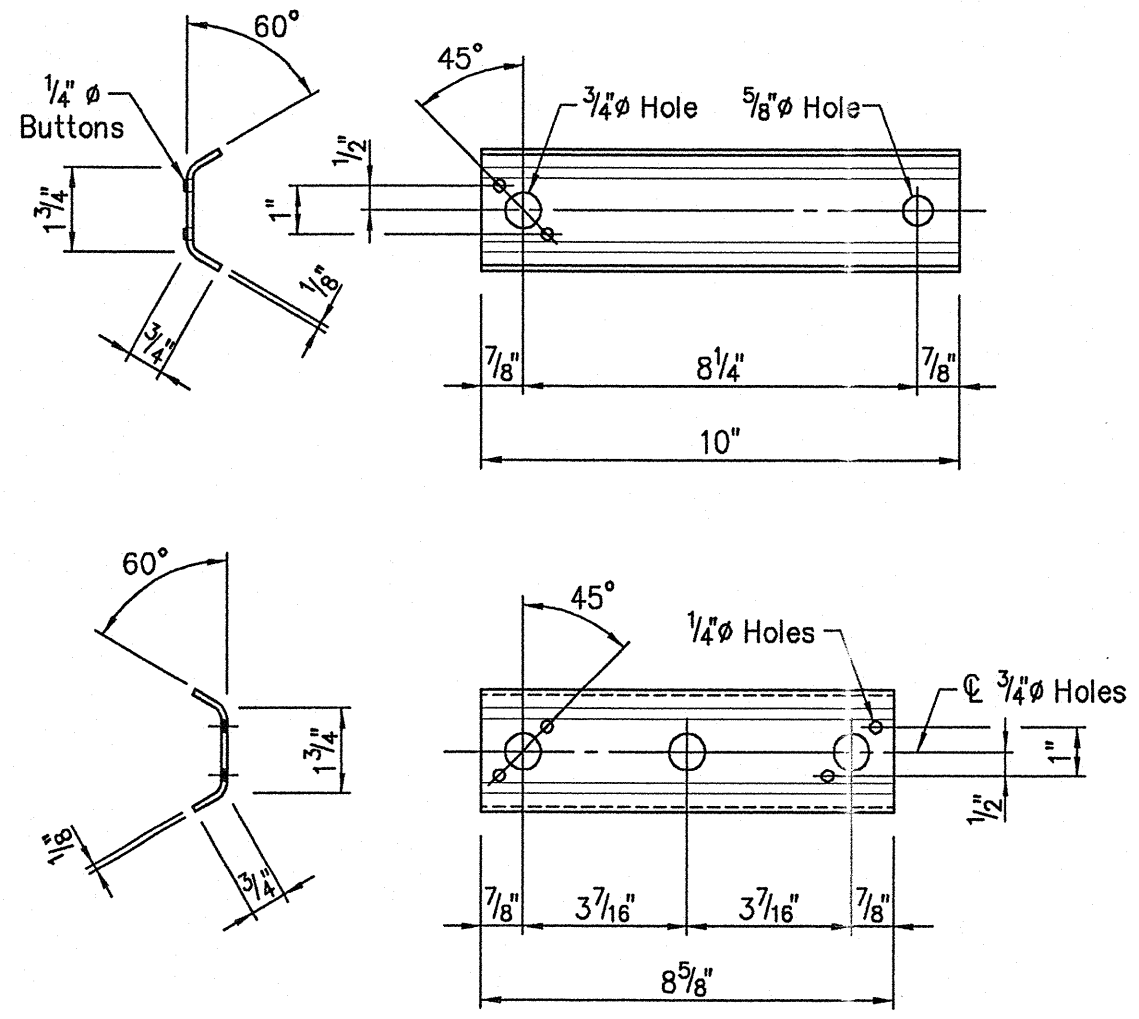


SECTION H-H  
Scale - 1 1/2" = 1'-0

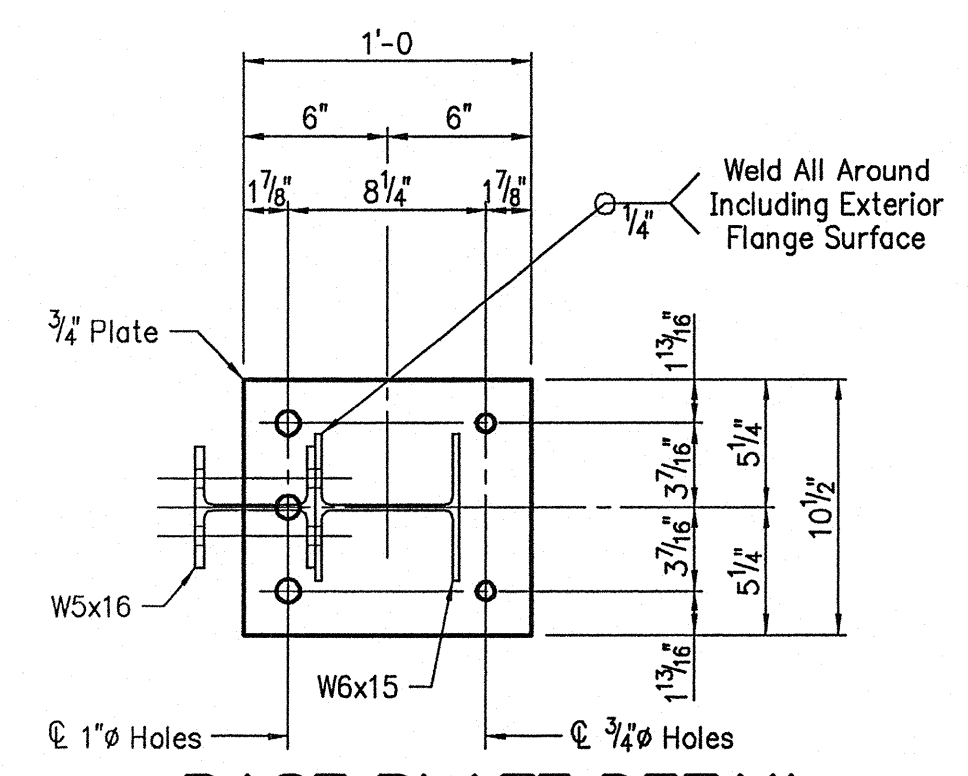
NOTE:  
For Thrie Beam Section, see Standard Drawing E601-TBGC-01.



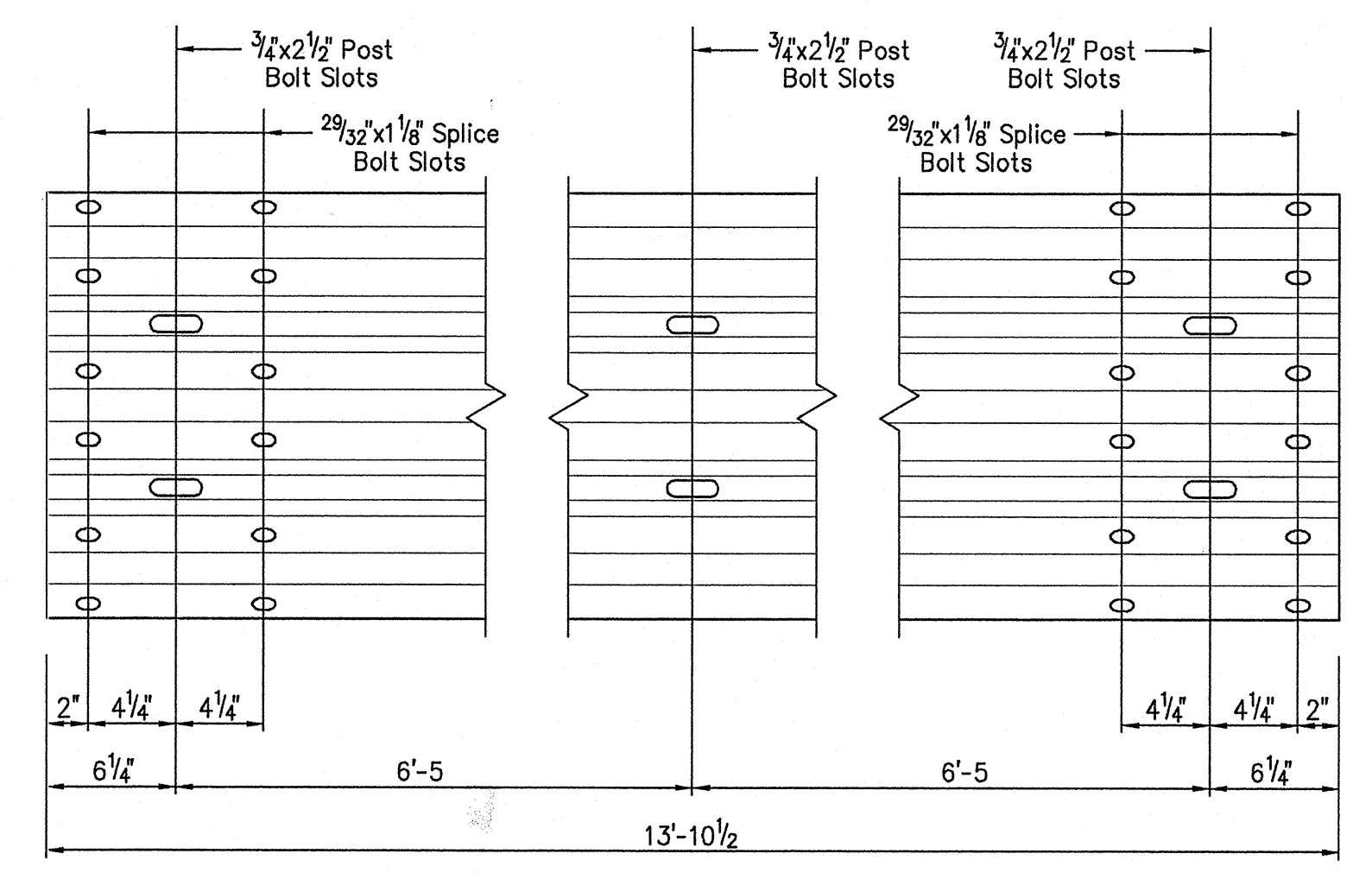
W6x15 GUARDRAIL POST DETAILS  
Scale - 1" = 1'-0



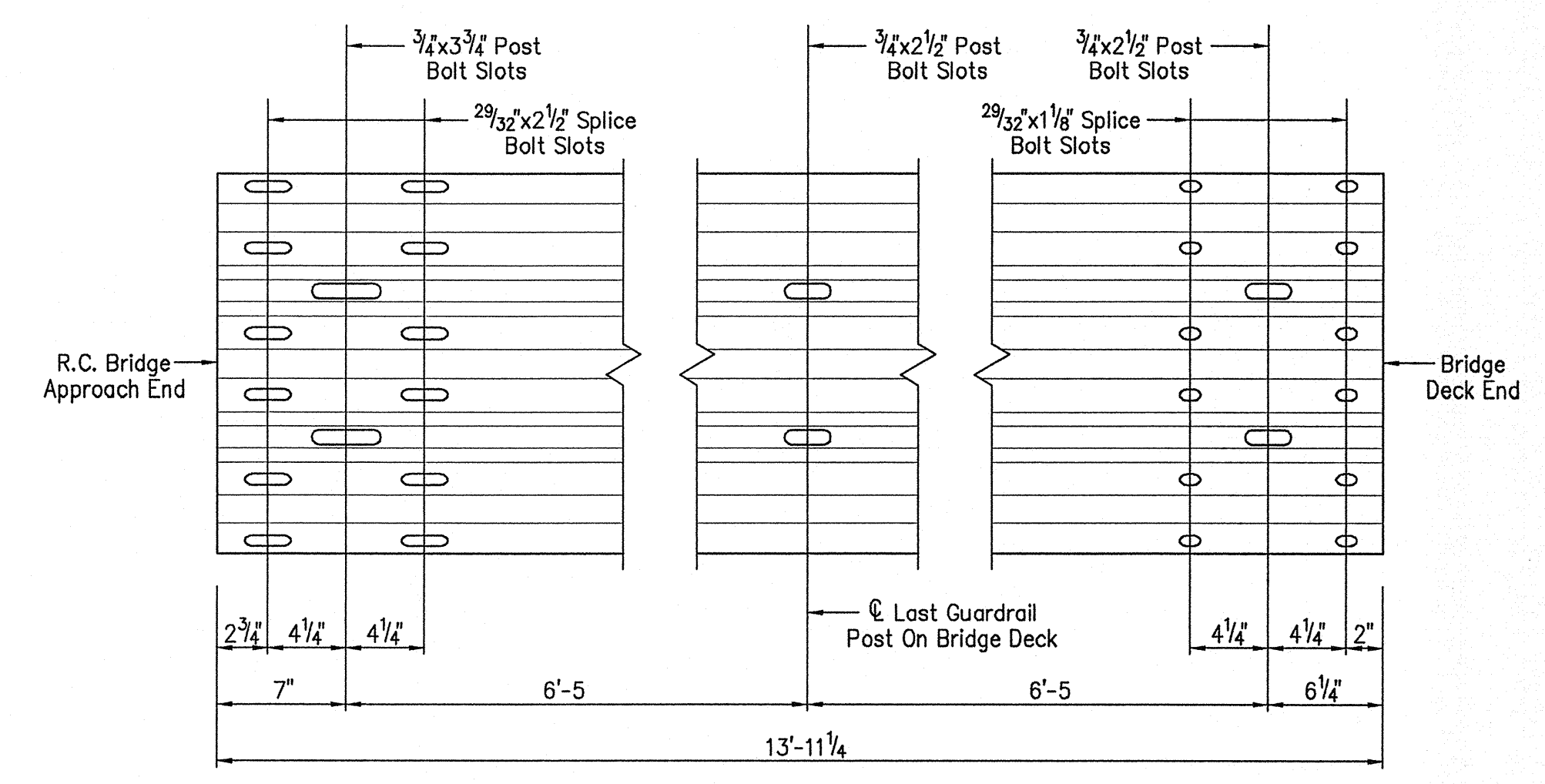
ANCHOR CHANNEL BARS  
Scale - 3" = 1'-0



BASE PLATE DETAIL  
Scale - 1 1/2" = 1'-0



THRIE BEAM ELEVATION  
Scale - 1 1/2" = 1'-0

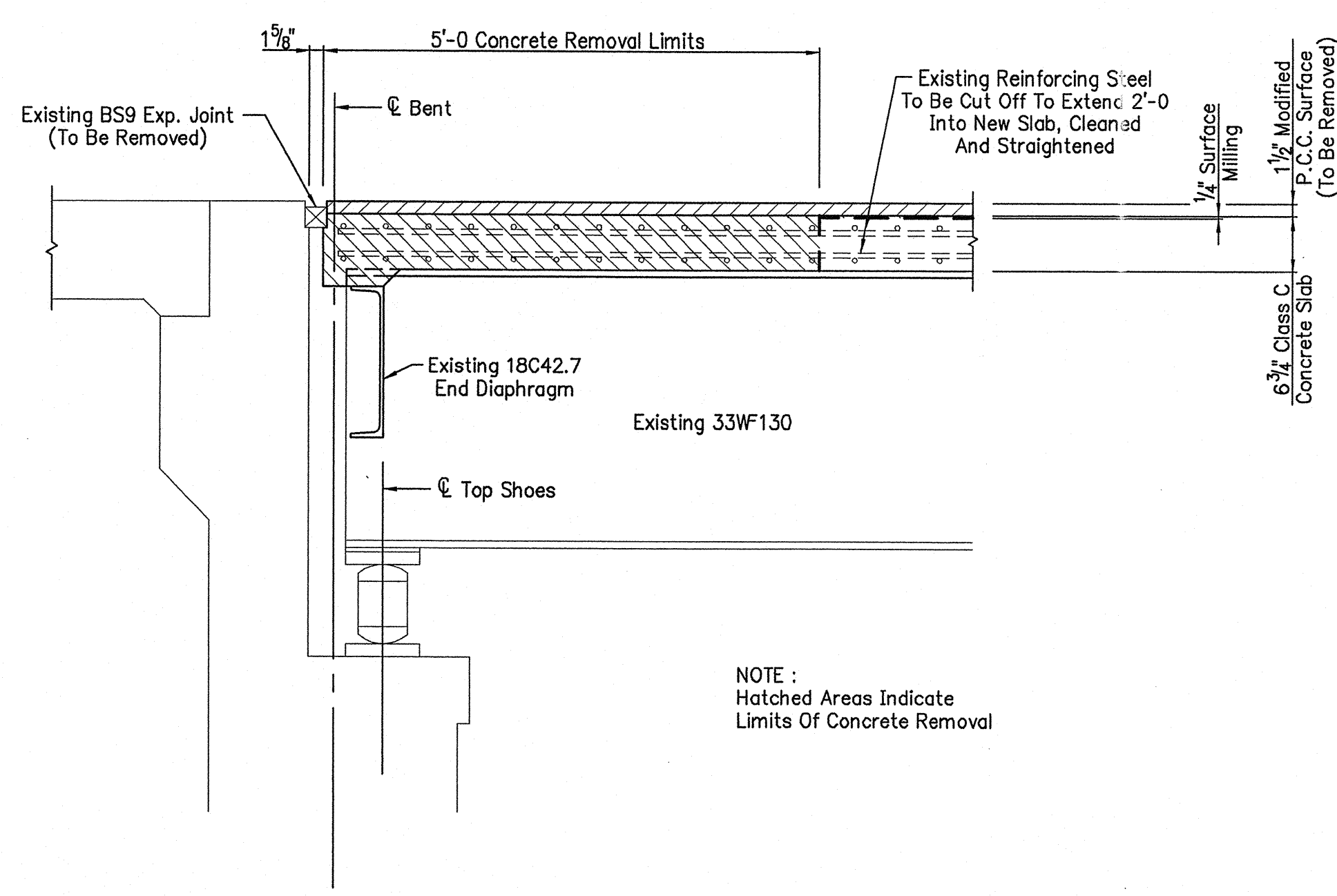


THRIE BEAM EXPANSION ELEMENT ELEVATION  
Scale - 1 1/2" = 1'-0

LYNX BIDDIES 7/1/02 1:39:06 PM IN:\2000\0911\265\BID.dwg COPY DATE: 07/25/02 13:38:55 EDITED BY: TLH - 011 DWG FILE: \IN\2000\0911\265\BID.dwg COPY DATE: 07/25/02 13:38:55  
 PLOT SCALE: 1:24,000

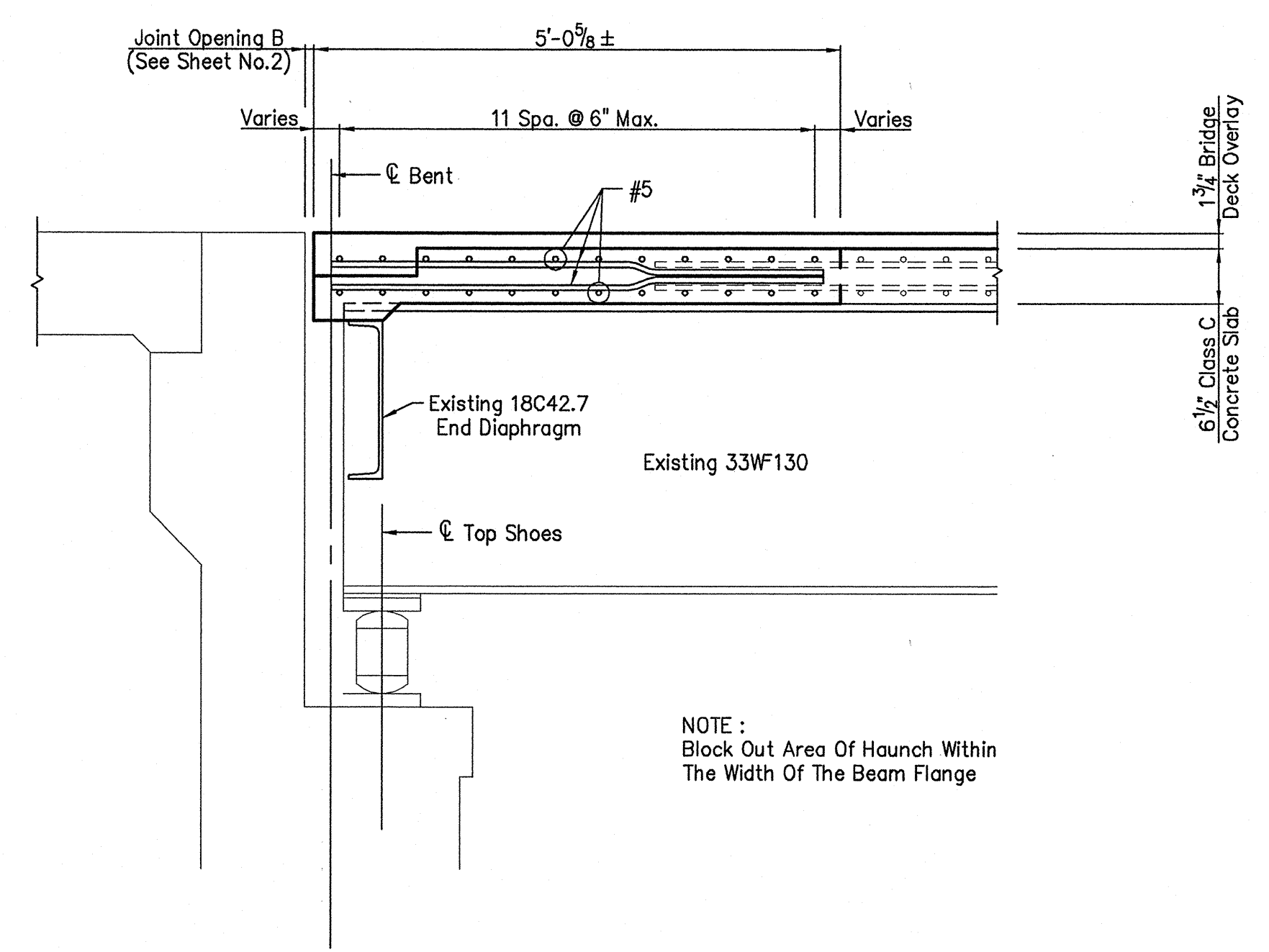
	RECOMMENDED FOR APPROVAL <i>M. Sean Porter</i> July 31, 2002 DESIGN ENGINEER DATE	<b>INDIANA DEPARTMENT OF TRANSPORTATION</b>	HORIZONTAL SCALE 1/2" = 1'-0, U.N.	BRIDGE FILE I-65-112-5732A
	DESIGNED: _____ DRAWN: RRC 11/7/01 CHECKED: _____ CHECKED: TLH 11/7/01		<b>SUPERSTRUCTURE DETAILS</b>	VERTICAL SCALE
			SURVEY BOOK	SHEETS
			CONTRACT R-26488	71 of 155
				PROJECT IM-65-3(288)





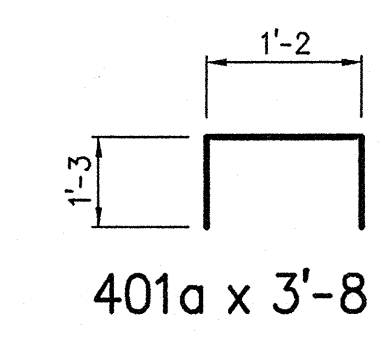
EXISTING SECTION B-B

NOTE:  
Hatched Areas Indicate  
Limits Of Concrete Removal



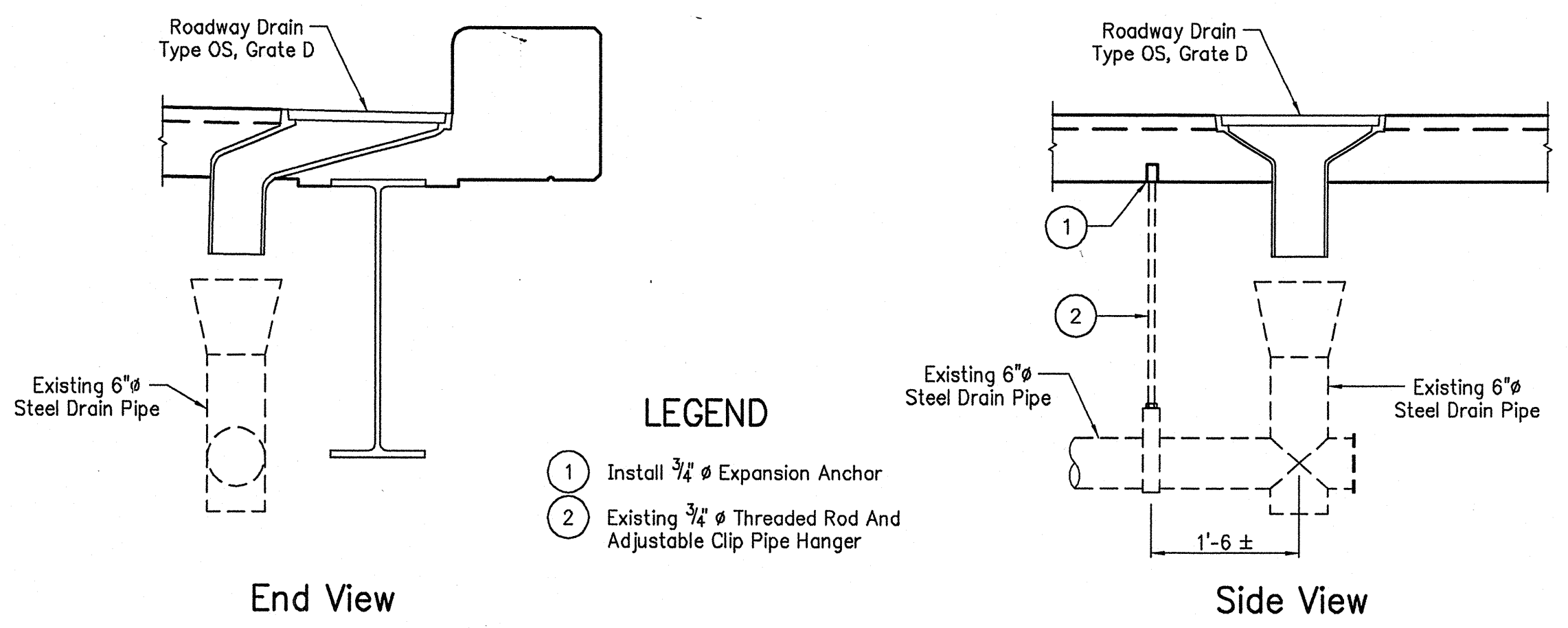
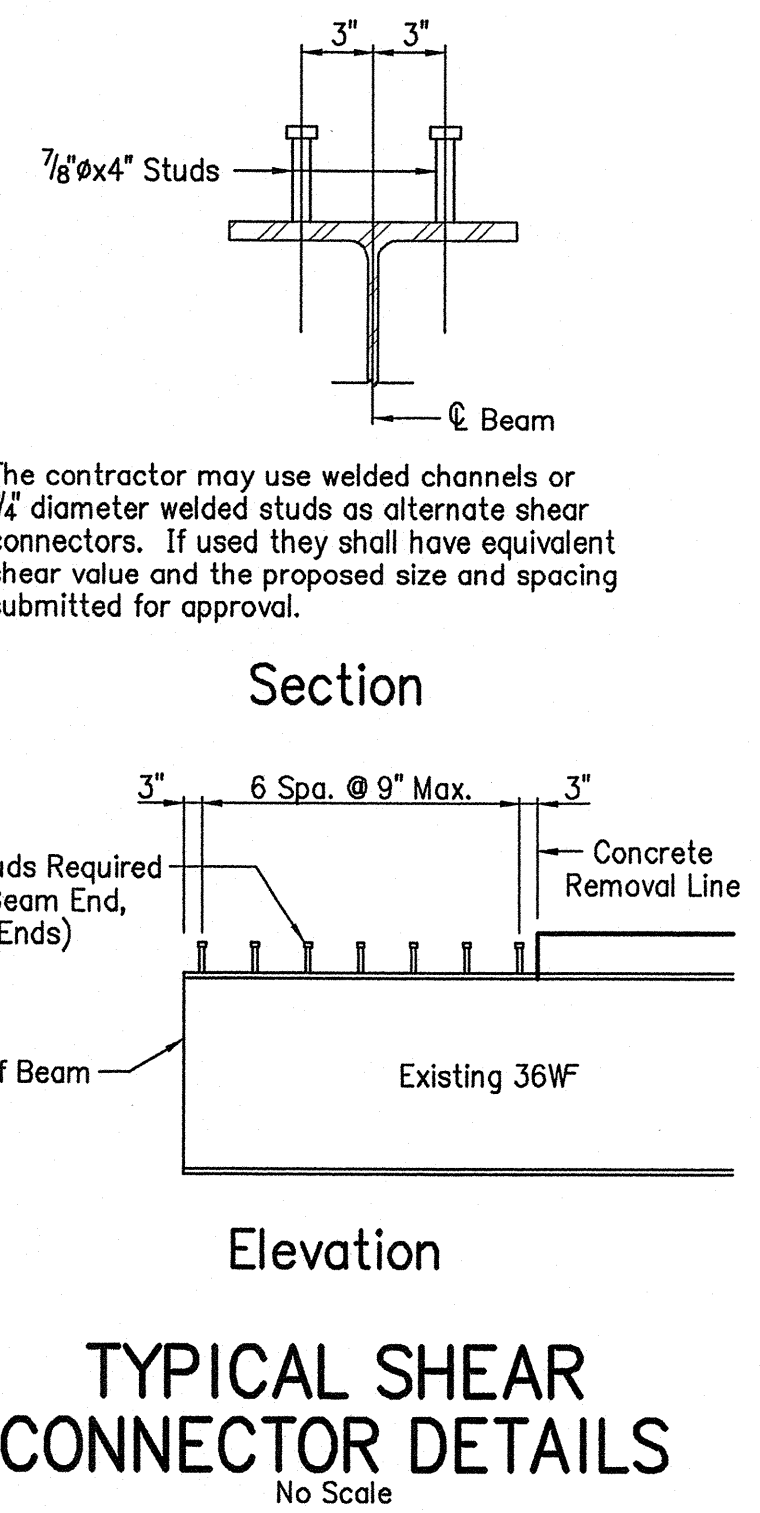
PROPOSED SECTION B-B

NOTE:  
Block Out Area Of Haunch Within  
The Width Of The Beam Flange



**SUPERSTRUCTURE  
BILL OF MATERIALS**

Plain Reinforcing Steel			
Size And Mark	No. Of Bars	Length (Feet)	Weight (Lbs.)
#5	96	34'-6"	
#5	296	4'-6"	
Total No.5			4844
401a	24	3'-8"	59
Total Plain Reinforcing Steel			4903
Concrete			
Class C In Superstructure			
Bent No.1			7.9 Cys.
Bent No.4			7.9 Cys.
Total Class C In Superstructure			15.8 Cys.
Miscellaneous			
Surface Seal			1160 Sft.
1- Roadway Drain Type OS, Grate D			322 Lbs.
Bridge Railing, Thrie Beam			282.5 Lft.
Bridge Railing, Remove			262.2 Lft.
Stud Shear Connectors			252 Each
Expansion Anchor, 0.75"			1 Each



NOTES:  
All reinforcing steel to be plain.  
For reinforcing bar notes, see Standard Drawing E703-BRST-01.

LYNNE REIDERS 7/3/02 1:30:01 PM E:\2000\0913\206\BIM.dwg COPYRIGHT 1965-2000  
 EDIT DATE: 07/25/02 14:00:33 EDITED BY: TJJ - STI ONE FILE: \\STPA\p\0913\206\BIM.dwg  
 PLOT SCALE: 1:16

RECOMMENDED FOR APPROVAL *M. Sean Porter* July 31, 2002  
DESIGN ENGINEER DATE

DESIGNED: DRAWN: DSH 11/12/01  
CHECKED: CHECKED: SA 2/25/02

**INDIANA  
DEPARTMENT OF TRANSPORTATION**

**SUPERSTRUCTURE DETAILS**

HORIZONTAL SCALE 3/4" = 1'-0, U.N.	BRIDGE FILE I-65-112-5732A
VERTICAL SCALE	DESIGNATION 0065615
SURVEY BOOK	SHEETS 72 of 155
CONTRACT R-26488	PROJECT IM-65-3(288)







